



Westerly Centaur 26

£4,995 • Essex United Kingdom (UK) • Used • 1973

Presented by

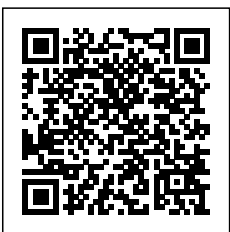
Peter Marchant
Phone: 44(0)1206302003

Morgan Marine
The Boatyard, Shipyard
Estate
CO7 0AR Colchester
United Kingdom (UK)

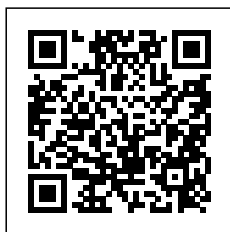


Details

Make:	Westerly
Model:	Centaur 26
Year:	1973
Condition:	Used
Engine type:	
Fuel type:	Diesel
Length:	7.92 m (25.98 ft)
Beam:	2.57 m (8.43 ft)
Cabins:	0
Berths:	0



Morgan Marine



7zea.com

Description

EN

1973 Westerly Centaur 26 Keiko II fitted with a Volvo Penta MD2020B 3-cylinder 19hp inboard diesel engine. This well regarded cruising yacht is known for its safe, forgiving handling and strong sailing pedigree, making it an excellent choice for coastal cruising and relaxed sailing in UK waters. The Westerly Centaur is a true classic of British yacht design, offering a surprisingly spacious and practical interior for her size. Below deck she provides comfortable accommodation with a full galley, separate toilet compartment, generous locker space and good headroom throughout, making extended trips aboard both practical and enjoyable. Her cast iron bilge keels give the boat the versatility and stability that the Centaur is famous for, allowing her to take the ground safely while still delivering dependable sailing performance. Solidly built and thoughtfully designed, she remains one of the most popular cruising yachts ever produced. This particular example has clearly been loved by her current owner and has recently benefited from important maintenance, including the hull being shot blasted and re-antifouled in 2025, along with a full engine service carried out in 2025 to ensure the Volvo Penta diesel continues to run reliably. A characterful and capable cruising yacht, ready to be enjoyed by her next owner and with many more years of sailing ahead. Contact Morgan Marine today for early viewing!

Deck: GRP hull. Bilge keel - Sand blasted and re-antifouled in 2025. Anchor, chain and rope. Spare anchor. Bow roller. All standing rigging and Furling gear wire rope stay renewed in Stainless Steel wire in 2006. Running rigging replaced in 2014. Boat hook. Main Crusader sail 1999 and Genoa sail. Furling jib 2002. Second set of spare sails. Fenders and lines. Sail cover. Pushpit and Pulpit. Stanchions. Midship cleats. Large front hatch. Auxiliary bracket. Horseshoe life ring.

Cabin: Sliding hatch into saloon area. 5 berths. Forward main berth with storage. Port and Starboard single stern berths. Fully galley area with 2 burner grill cooker (brand new - never used), sink with fresh water, and lots of lockers and side lockers. Toilet compartment with Jabsco marine toilet and window. Hatch to deck. Saloon L-shaped cushioned seating. Various cooking and tool sundries. Life Jacket - Expires 2027.

Cockpit: Large deep, safe cockpit with port and starboard bench style seating. Tiller Steering. Windows resealed in 2014.

Electronics: NASA marine SX35 DSC VHF radio. Plastimo Digipak CW speed and depth gauge. Switch panel. Cabin lights. Bilge pump. Compass. Navigation lights.

Machinery: Volvo Penta MD2020B 3-cylinder 19 hp inboard diesel engine. Installed in 1995. Engine serviced in 2025. Anodes changed in 2025. Fuel capacity 45 Litres. Water capacity - 65 Litres. Johnson 3hp 2003 auxiliary outboard engine - Serial number - 09493823.

General information

Make:	Westerly
Model:	Centaur 26
Year:	1973
Condition:	Used

Engine

Engine type:	
Fuel type:	Diesel

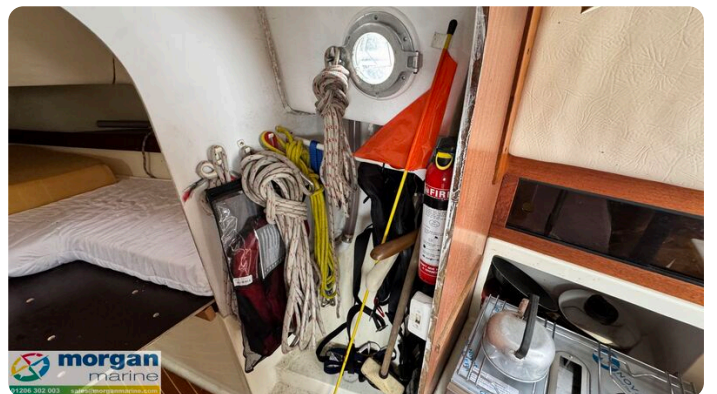
Measurements

Length:	7.92 m (25.98 ft)
Beam:	2.57 m (8.43 ft)
Deep:	0.91 m (2.99 ft)

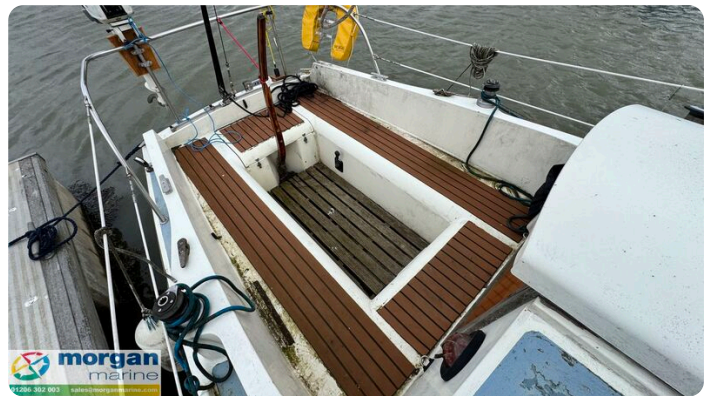
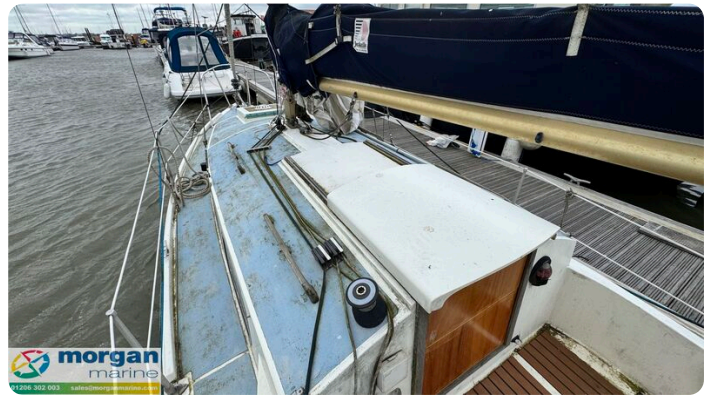
Accommodation

Cabins:	0
Berths:	0

Images











Morgan Marine

The Boatyard, Shipyard Estate
CO7 0AR Colchester
United Kingdom (UK)

Phone: 44(0)1206302003

<https://morganmarine.com>

