



Van Der Werff Lemmer Colin Archer 11m

€99,000 • Norddeutschland Germany • Used • 1978

Presented by

Jan Spengler
Phone: +49 4101 5155566

**Michael Schmidt &
Partner Yachthandels
GmbH**

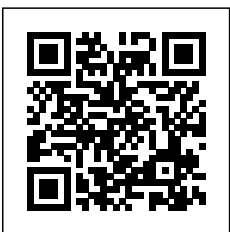
Rübekamp 5
25421 Pinneberg
Germany



Michael Schmidt & Partner
International Yachtbrokers

Details

Make:	Van Der Werff Lemmer
Model:	Colin Archer 11m
Year:	1978
Condition:	Used
Engine:	Nanni Nanni Diesel, 62 hp
Engine type:	
Fuel type:	Diesel
Fuel tank:	600 l (158.50 gal)
Length:	11 m (36.09 ft)
Beam:	3.65 m (11.98 ft)
Cabins:	0
Berths:	0



Michael Schmidt &
Partner Yachthandels
GmbH



7zea.com

Description

EN

Motor sailer Vikingbank 1100 - classic with charm and two helm stations.

Solid steel displacement boat from 1978, 11 m long, ideal for inland and coastal waters.

Equipped with a reliable diesel engine (e.g. Nanni 62 hp), spacious saloon, galley, cabin and wet room.

Well maintained, ideal for relaxed tours or as a permanent berth.

Exclusively on offer at Michael Schmidt & Partner. Central Agent! Detailed questions are welcome. Talk to us, we have visited this yacht for you.

More photos, headroom and bunk lengths on request!

Navigation equipment:

AIS (+ empfangen und schicken), Rudder angle indicator, Radar Antenna, chronometer (und Uhr), DSC vhf, Depth Sounder (Simrad), GPS (FURUNO), Log (Simrad), MeteoFax, Autopilot (Simrad), Plotter with GPS antenna (Garmin), Radar (Marine 1623 RDP-141).

Staging and technical:

2 Anchor, Water pressure pump, 4 Batteries (2x Verbraucher 240 Ah, 1x Starter AGM 95 Ah, 1x Generator), Twin Steering, Bow Thruster (5 PS), 2 Solar panels, Gangway, Manual Bilge Pump, Entry door, Shorepower connector, Electric Windlass (Anchorlift), Strand rigging, swimming ladder, cockpit table, Living Room Foldable Table, Tender, Horn, 3 Winch (Lewmar 2x 48er, 1x 30er), Windex.

Domestic Facilities onboard:

Warm Water System, Waste Water Plant (90l), 12V Outlets, 220V Outlets, Heater (Webasto), Electric Toilet.

Security equipment:

Barometer.

Entertainment:

2 Speakers (Pioneer TS-44), DTV, Radio AM/FM (Kenwood KMM-BT508DAB), TV (mobiler TV).

Sails accessories:

Bowsprit, 2 Lazy Bag, 2 Sail Bag.

Kitchen and appliances:

Central Vacuum System (JOP), Galley, Burner, Oven (FORCEJO), Coffee Machine, Ceramic hot plate (3 flammig).

Upholstery:

Cushions, Cockpit Cushions, Blackout Curtains.

Accessories notes:

Telescopic ladder

Bath hose

Kerosene lamp

Reading lamps

GreenCell INV05DE inverter

Battery Monitor Victon Energy BMV-501

USB ports at helm station

Fenders, Lines

New Consumer Batteries New July 2025

IT

Motor sailer Vikingbank 1100 - classic with charm and two helm stations.

Solid steel displacement boat from 1978, 11 m long, ideal for

inland and coastal waters.

Equipped with a reliable diesel engine (e.g. Nanni 62 hp), spacious saloon, galley, cabin and wet room.

Well maintained, ideal for relaxed tours or as a permanent berth.

Exclusively on offer at Michael Schmidt & Partner. Central Agent! Detailed questions are welcome. Talk to us, we have visited this yacht for you.

More photos, headroom and bunk lengths on request!

Strumentazione elettronica di navigazione:

AIS (+ empfangen und schicken), Angolo barra, Antenna radar, Cronometro (und Uhr), DSC vhf, Ecoscandaglio (Simrad), GPS (FURUNO), Log (Simrad), MeteoFax, Pilota automatico (Simrad), Plotter con antenna GPS (Garmin), Radar (Marine 1623 RDP-141).

Allestimento tecnico e di coperta:

2 Ancora, Autoclave, 4 Batterie (2x Verbraucher 240 Ah, 1x Starter AGM 95 Ah, 1x Generator), Doppia timoneria, Elica di prua - bow thruster (5 PS), 2 Pannelli Solari, Passerella, Pompa di sentina manuale, Porta ingresso, Presa 220V banchina, Salpa Ancore Elettrico (Anchorlift), Sartieme spiroidale, Scaletta da bagno, Tavolo pozzetto, Tavolo Salone Abbattibile, Tender, Tromba, 3 Winch (Lewmar 2x 48er, 1x 30er), Windex.

Dotazioni domestiche di bordo:

Boiler, Impianto acque nere (90l), Prese interne 12v, Prese interne 220v, Riscaldamento (Webasto), WC marino elettrico.

Dotazioni di sicurezza:

Barometro.

Intrattenimento:

2 Altoparlanti (Pioneer TS-44), Digitale Terrestre, Radio AM/FM (Kenwood KMM-BT508DAB), TV (mobiler TV).

Accessori Vele:

Bompreso, 2 Lazy Bag, 2 Sail Bag.

Cucina ed elettrodomestici:

Aspirapolvere centralizzato (JOP), Cucina, Fornello, Forno (FORCEJO), Macchina caffè, Piastra in vetroceramica (3 flammig).

Tappezzerie:

Cuscineria completa, Cuscineria Pozzetto, Oscuranti.

Note accessori:

Scaletta telescopica

Tubo da bagno

Lampada a cherosene

Lampade

Convertitore di frequenza INV05DE GreenCell

Monitor Batteria Victon Energy BMV-501

Porte USB alla postazione di guida

Parabordi, Linee

Nuove batterie di consumo Nuovo luglio 2025

FR

Motor sailer Vikingbank 1100 - classic with charm and two helm stations.

Solid steel displacement boat from 1978, 11 m long, ideal for inland and coastal waters.

Equipped with a reliable diesel engine (e.g. Nanni 62 hp), spacious saloon, galley, cabin and wet room.

Well maintained, ideal for relaxed tours or as a permanent berth.

Exclusively on offer at Michael Schmidt & Partner. Central Agent! Detailed questions are welcome. Talk to us, we have visited this yacht for you.
More photos, headroom and bunk lengths on request!

Equipement électronique de navigation:
AIS (+ empfangen und schicken), Indicateur d'angle de barre, Antenne radar, Montre de bord (und Uhr), DSC VHF, Sondeur pêche (Simrad), GPS (FURUNO), Loch (Simrad), MeteoFax, Pilote automatique (Simrad), Plotter GPS (Garmin), Radar (Marine 1623 RDP-141).

Equipement de pont:
2 Ancre, Eau sous pression, 4 Batteries (2x Verbraucher 240 Ah, 1x Starter AGM 95 Ah, 1x Generator), Double barre à roue, Propulseur d'étrave (5 PS), 2 Panneau solaire, Passerelle, Pompe de cale manuelle, Porte latérale, Prise de quai, Guindeau électrique (Anchorlift), Grément monotonon, Echelle de bain, table de cockpit, Table pliante de salon, Annexe, Corne, 3 Winch (Lewmar 2x 48er, 1x 30er), Windex.

Equipement intérieur:
Ballon d'eau chaude, Cuve à eaux noires (90l), Prises interieures 12v, Prises interieures 220v, Chauffage (Webasto), Toilettes électriques.

Equipement de sécurité:
Baromètre.

Divers:
2 Haut-parleurs (Pioneer TS-44), TNT, Radio AM/FM (Kenwood KMM-BT508DAB), TV (mobiler TV).

Equipement voiles:
Bout-dehors, 2 Lazy Bag, 2 Sac à voile.

Equipement de confort:
Aspirateur centralisé (JOP), Cuisine, Cuisinière, Four (FORCEJO), Machine a café, Plaque vitrocéramique (3 flammig).

Sellerie et tauds:
Sellerie complète, sellerie de cockpit, Rideaux occultants.

Notes équipement:
Échelle télescopique
Tuyau de bain
Lampe à pétrole
Lampes de lecture
Onduleur INV05DE GreenCell
Contrôleur de batterie Victon Energy BMV-501
Ports USB au poste de pilotage
Ailes, Lignes
Nouvelles batteries grand public Nouveauté juillet 2025

DE
Motorsegler Vikingbank 1100 – Klassiker mit Charme und zwei Steuerständen.

Solides Stahlverdrängerboot aus 1978, 11 m lang, ideal für Binnen- und Küstengewässer.

Ausgestattet mit zuverlässigem Dieselmotor (z. B. Nanni 62 PS), großzügigem Salon, Pantry, Kabine und Nasszelle.

Gut gepflegt, ideal für entspannte Touren oder als Dauerlieger.

Exklusiv im Angebot bei Michael Schmidt & Partner. Central Agent! Detailfragen sind herzlich willkommen. Sprechen Sie uns an, wir haben diese Yacht für Sie besichtigt.
Weitere Fotos, Stehhöhen und Kojenlängen auf Anfrage!

Navigation elektronische Instrumentation:
AIS (+ empfangen und schicken), Ruderlageanzeiger, Radarantenne, Chronometer (und Uhr), DSC UKW, Echolot (Simrad), GPS (FURUNO), Log (Simrad), Navtex Empfänger, Autopilot (Simrad), Kartenplotter mit GPS (Garmin), Radar (Marine 1623 RDP-141).

Deck und technische Ausrüstung:
2 Anker, Druckwasserpumpe, 4 Batterien (2x Verbraucher 240 Ah, 1x Starter AGM 95 Ah, 1x Generator), Doppelsteueranlage, Bugstrahlruder (5 PS), 2 Solarpanel, Gangway, manuelle Bilgepumpe, Eingangstür, Landanschluß, elektrische Ankerwinde (Anchorlift), Stehendes Gut, Badeleiter, Cockpittisch, Klappbarer Wohnzimmertisch, Beiboot, Signalhorn, 3 Winschen (Lewmar 2x 48er, 1x 30er), Windex.

Anlagen an Bord:
Warmwasserbereiter, Faekalientank (90l), 12V Steckdose, 220V Steckdose, Heizung (Webasto), elektrische Toilette.

Sicherheit:
Barometer.

Unterhaltung:
2 Lautsprecher (Pioneer TS-44), DVBT, Radio AM/FM (Kenwood KMM-BT508DAB), TV (mobiler TV).

Rigg:
Bugspruit, 2 Lazy Bag, 2 Segelsack.

Küchen-und Haushaltsgeräte:
Staubsauger (JOP), Pantry, Herd, Backofen (FORCEJO), Kaffeemaschine, Ceran-Kochfeld (3 flammig).

Polster und Persenninge:
Polster, Cockpitpolster, Verdunkelungsvorhänge.

Hinweis-Zubehör:
Teleskopleiter
Badeschlauch
Petroleumlampe
Leselampen
Wechselrichter GreenCell INV05DE
Batterie Monitor Victon Energy BMV-501
USB-Anschlüsse am Steuerstand
Fender, Leinen
Neue Verbraucher Batterien Neu Juli 2025

ES
Motor sailer Vikingbank 1100 – classic with charm and two helm stations.

Solid steel displacement boat from 1978, 11 m long, ideal for inland and coastal waters.

Equipped with a reliable diesel engine (e.g. Nanni 62 hp), spacious saloon, galley, cabin and wet room.

Well maintained, ideal for relaxed tours or as a permanent berth.

Exclusively on offer at Michael Schmidt & Partner. Central Agent! Detailed questions are welcome. Talk to us, we have visited this yacht for you.
More photos, headroom and bunk lengths on request!

Instrumentación electrónica de navegación:
AIS (+ empfangen und schicken), Indicador de ángulo de timón, Antena de radar, Cronómetro (und Uhr), VHF con DSC, Sonda (Simrad), GPS (FURUNO), Corredera (Simrad), Meteo fax, Piloto automático (Simrad), Plotter con antena GPS (Garmin), Radar (Marine 1623 RDP-141).

Equipo técnico y de cubierta:
2 Ancla, Bomba de agua dulce, 4 Baterías (2x Verbraucher 240

Ah, 1x Starter AGM 95 Ah, 1x Generator), Doble rueda de timón, Hélice de proa (5 PS), 2 Paneles solares, Pasarela, Bomba de achique manual, Puerta de entrada, Toma de 220V para el puerto, Molinete eléctrico (Anchorlift), Strand aparejo, Escalera de baño, mesa de bañera, Mesa plegable para sala de estar, Auxiliar, Bocina, 3 Winch (Lewmar 2x 48er, 1x 30er), Windex.

Enseres domesticos de abodo:
Calentador, Instalación aguas negras (90l), Tomas de 12v, Enchufes de 220v, Calefacción (Webasto), WC marino eléctrico.

Equipo de seguridad:
Barómetro.

Entretenimiento:
2 Altavoces (Pioneer TS-44), Digital terrestre, Radio AM/FM (Kenwood KMM-BT508DAB), TV (mobiler TV).

Accesorios Velas:
Bauprés, 2 Lazy Bag, 2 Bolsa de vela mayor.

Cocina y electrodomésticos:
Aspirador centralizado (JOP), Cocina, Fogón, Horno (FORCEJO), Máquina de café, Placa vitrocerámica (3 flammig).

Tapicerías:
Cojinería completa, Cojinería bañera, Cortinas Opacas.

Notas accesorios:
Escalera telescópica
Manguera de baño
Lámpara de queroseno
Lámparas de lectura
Inversor INV05DE GreenCell
Monitor de batería Victon Energy BMV-501
Puertos USB en el puesto de mando
Guardabarros, Líneas
Nuevas baterías de consumo Nuevo julio 2025

NL
Motor sailer Vikingbank 1100 – classic with charm and two helm stations.

Solid steel displacement boat from 1978, 11 m long, ideal for inland and coastal waters.

Equipped with a reliable diesel engine (e.g. Nanni 62 hp), spacious saloon, galley, cabin and wet room.

Well maintained, ideal for relaxed tours or as a permanent berth.

Exclusively on offer at Michael Schmidt & Partner. Central Agent! Detailed questions are welcome. Talk to us, we have visited this yacht for you.
More photos, headroom and bunk lengths on request!

Elektronische navigatie-instrumenten:
AIS (+ empfangen und schicken), Roerhoek indicator, Radar antenne, Chronometer (und Uhr), DSC marifoon, Dieptemeter (Simrad), GPS (FURUNO), Log (Simrad), Navtex (weerschrijver), Autopilot (Simrad), Kaartplotter met GPS-antenne (Garmin), Radar (Marine 1623 RDP-141).

Technische- en dekuitrusting:
2 Anker, Waterdruk systeem, 4 Accu's (2x Verbraucher 240 Ah, 1x Starter AGM 95 Ah, 1x Generator), Dubbele besturing, Boegschroef (5 PS), 2 Zonnepanelen, Loopplank, Handmatige bilgepomp, Ingangsdeur, Walaansluiting 230V, Elektrische ankerlier (Anchorlift), Staand want, Zwemtrap, Kuipafel, Opklapbare salontafel, Bijboot, Hoorn, 3 Lier (Lewmar 2x 48er, 1x 30er), Windex.

Huishoudelijke apparatuur aan boord:
Warmwater boiler, Fecaliëntank (90l), 12V Stopcontacten, 230V Stopcontacten, Verwarming (Webasto), Elektrisch toilet.

Veiligheidsuitrusting:
Barometer.

Vermaak:
2 Luidsprekers (Pioneer TS-44), DVB-T-tuner, Radio AM/FM (Kenwood KMM-BT508DAB), TV (mobiler TV).

Accessoires Zeilen:
Boegspriet, 2 Lazy Bag, 2 Zeil tas.

Keuken & Apparatuur:
Centraal stofzuig systeem (JOP), Keuken, Fornois, Oven (FORCEJO), Koffiezetapparaat, Keramische kookplaat (3 flammig).

Bekleding:
Kussens, Kuipkussens, Verduistering.

Opmerkingen over accessoires:
Telescopische ladder
Badslang
Kerosine lamp
Leeslampjes
GreenCell INV05DE omvormer
Batterij Monitor Victon Energy BMV-501
USB-poorten op de stuurstand
Stootwillen, Lijnen
Nieuwe consumentenbatterijen Nieuw juli 2025

RU
Motor sailer Vikingbank 1100 – classic with charm and two helm stations.

Solid steel displacement boat from 1978, 11 m long, ideal for inland and coastal waters.

Equipped with a reliable diesel engine (e.g. Nanni 62 hp), spacious saloon, galley, cabin and wet room.

Well maintained, ideal for relaxed tours or as a permanent berth.

Exclusively on offer at Michael Schmidt & Partner. Central Agent! Detailed questions are welcome. Talk to us, we have visited this yacht for you.
More photos, headroom and bunk lengths on request!

Электронные навигационные приборы:
AIS (+ empfangen und schicken), Угол поворота, антенна РЛС, chronometer (und Uhr), DSC, Эхолот (Simrad), GPS (FURUNO), Вход (Simrad), МетеоФакс, Автопилот (Simrad), Плоттер с GPS антенны (Garmin), Радар (Marine 1623 RDP-141).

Техническое оснащение и оснащение палубы:
2 Якорь, Автоклав, 4 аккумулятора (2x Verbraucher 240 Ah, 1x Starter AGM 95 Ah, 1x Generator), Двойной штурвал, Винт носовой части - bowtruster (5 PS), 2 Солнечные панели, сходни, Ручной трюмный насос, Входная дверь, Прямая розетка от причала, Электрическая якорная лебедка (Anchorlift), Талрепы спираль, Трап ванной, соскрит table, Складной стол для гостиной, Тендер, Рупор, 3 Лебедка (Lewmar 2x 48er, 1x 30er), Windex.

Бытовое оснащение на борту:
котлом, Установка для сточных вод (90l), Внутренние розетки 12v, Внутренние розетки 220v, Отопление (Webasto), Электрический морской туалет.

Оборудование для обеспечения безопасности:
барометр.

Развлечения:

2 динамиков (Pioneer TS-44), Наземное цифровое, Radio AM/FM (Kenwood KMM-BT508DAB), ТВ (mobiler TV).

Аксессуары паруса:

Бушприт, 2 Lazy Bag, 2 Парусный чехол.

Кухня и бытовые приборы:

Централизованный пылесос (JOP), Кухня, плитой, духовки (FORCEJO), Кофеварка, Керамическая плита (3 flammig).

Обивка:

полное подушки, Кокпит подушки, Плотные шторы.

Дополнительные примечания:

Телескопическая лестница
Шланг для ванны
Керосиновая лампа
Лампы для чтения
Инвертор GreenCell INV05DE
Аккумуляторный монитор Victron Energy BMV-501
USB-порты на посту управления
Крылья, стропы
Новые потребительские аккумуляторы Новый июль 2025 г.

General information

Make:	Van Der Werff Lemmer
Model:	Colin Archer 11m
Year:	1978
Condition:	Used

Engine

Engine:	Nanni Nanni Diesel, 62 hp
Engine type:	
Fuel type:	Diesel
Fuel tank:	600 l (158.50 gal)

Measurements

Length:	11 m (36.09 ft)
Beam:	3.65 m (11.98 ft)
Deep:	1.65 m (5.41 ft)
Weight:	11000 kg (24,250.44 lb)

Accommodation

Cabins:	0
Berths:	0

Images



0



2



1



Vikingbank 1100 HOPPETOSSSE 88



Vikingbank 1100 HOPPETOSSSE 91



Vikingbank 1100 HOPPETOSSSE 1



Vikingbank 1100 HOPPETOSSSE 18



Vikingbank 1100 HOPPETOSSSE 24



Vikingbank 1100 HOPPETOSSE 23



Vikingbank 1100 HOPPETOSSE 22



Vikingbank 1100 HOPPETOSSE 39



Vikingbank 1100 HOPPETOSSE 32



Vikingbank 1100 HOPPETOSSE 33



Vikingbank 1100 HOPPETOSSE 36



Vikingbank 1100 HOPPETOSSE 42



Vikingbank 1100 HOPPETOSSE 45



Vikingbank 1100 HOPPETOSSE 47



Vikingbank 1100 HOPPETOSSE 57



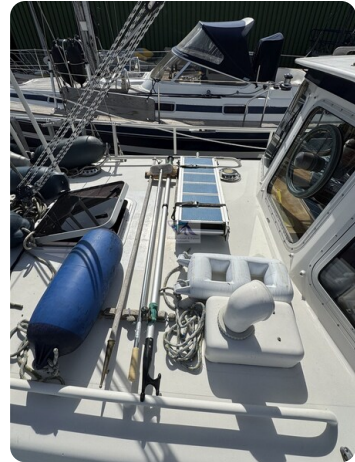
Vikingbank 1100 HOPPETOSSE 60



Vikingbank 1100 HOPPETOSSE 63



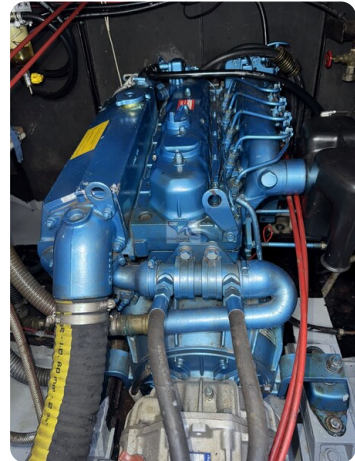
Vikingbank 1100 HOPPETOSSE 64



Vikingbank 1100 HOPPETOSSE 69



Vikingbank 1100 HOPPETOSSE 71



Vikingbank 1100 HOPPETOSSE 10

Michael Schmidt & Partner Yachthandels GmbH

Rübekamp 5
25421 Pinneberg
Germany

Phone: +49 4101 5155566

<https://www.msp-yacht.de>



Michael Schmidt & Partner
International Yachtbrokers