



# Smartliner Cuddy 19

£21,995 • Essex United Kingdom (UK) • Used • 2022

## Presented by

Peter Marchant  
Phone: 44(0)1206302003

**Morgan Marine**  
The Boatyard, Shipyard  
Estate  
CO7 0AR Colchester  
United Kingdom (UK)



## Details

Make:	Smartliner
Model:	Cuddy 19
Year:	2022
Condition:	Used
Engine type:	
Fuel type:	Gasoline
Length:	5.8 m (19.03 ft)
Beam:	2.25 m (7.38 ft)
Cabins:	0
Berths:	0



Morgan Marine



7zea.com

# Description

EN

2022 Smartliner Cuddy 19. Charlotte is a brilliant option for both anglers and leisure boaters, she offers an economical and versatile ride that's easy to handle and delivers impressive on-water performance. Powered by a Suzuki DF80 outboard with electric start and power trim and tilt, with approx 100 engine hours, this popular model is ready for adventure. Charlotte features a spacious cockpit with ample room for fishing or relaxing, complete with rod holders, an enclosed cuddy with bench seating, and adjustable swivelling pilot and co-pilot bolster seats. Onboard navigation and communications are fully equipped with a Garmin chart plotter and Cobra VHF radio with GPS, and she comes presented with a protective Tonneau cover and a host of smart onboard extras. Don't miss the chance to view this sought-after Smartliner. Contact Morgan Marine today to arrange an early viewing!

Deck: GRP hull. Large non slip self draining cockpit. Large anchor locker with anchor, chain and rope. Bow roller. Stainless steel bow eye. Stainless steel mooring cleats. Fenders and lines. Rod holders. Stern Stainless Steel fold up boarding ladder. Stainless Steel grab rails. Auxiliary bracket. Rubbing strake. Tonneau cover.

Cabin: Enclosed cuddy area with U-shaped bench seating with storage. Walk through windscreen to access anchor locker.

Cockpit: Adjustable and swivelling pilot and co-pilot bolster seats with backrest. Dash with steering wheel, electronics and engine controls. Port and starboard stern seating. Igloo cooler box.

Electronics: Garmin chart plotter. Cobra VHF radio with GPS. 12v socket. USB socket. Manual and electric bilge pump. Foredeck light. Suzuki trim and RPM gauges. Switch panel. Anchor light. Navigation lights. Compass. Battery isolator.

Machinery: Suzuki DF80 outboard with power trim and tilt. Fuel capacity - 75 litres.

## General information

Make:	Smartliner
Model:	Cuddy 19
Year:	2022
Condition:	Used

## Engine

Engine type:	
Fuel type:	Gasoline

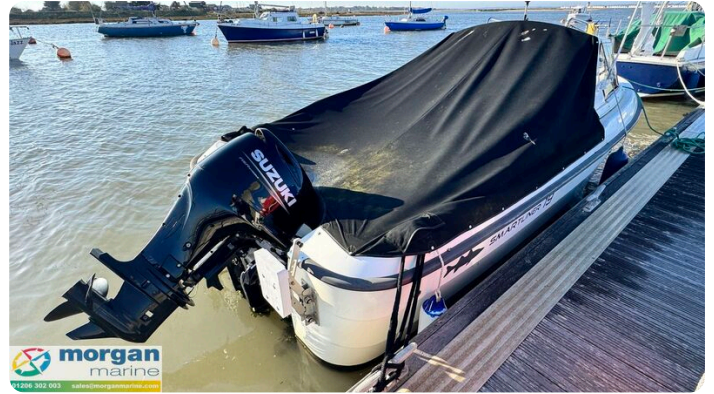
## Measurements

Length:	5.8 m (19.03 ft)
Beam:	2.25 m (7.38 ft)
Deep:	0.4 m (1.31 ft)
Weight:	0 ( )

## Accommodation

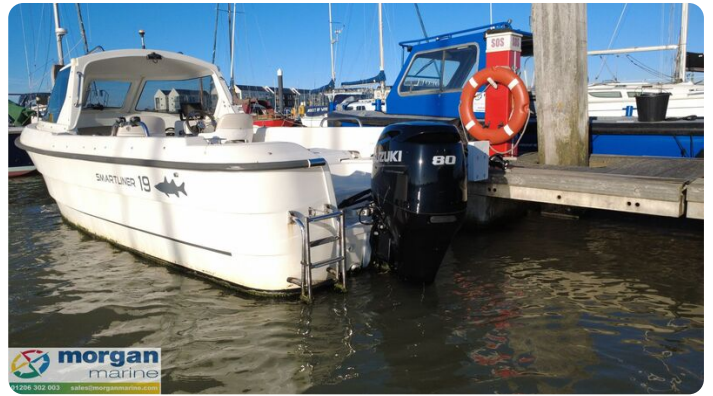
Cabins:	0
Berths:	0

# Images











**Morgan Marine**

The Boatyard, Shipyard Estate  
CO7 0AR Colchester  
United Kingdom (UK)

Phone: 44(0)1206302003

<https://morganmarine.com>

