



Nimbus 305 Coupe

£299,995 • Essex United Kingdom (UK) • New • 2025

Presented by

Peter Marchant
Phone: 44(0)1206302003

Morgan Marine
The Boatyard, Shipyard
Estate
CO7 0AR Colchester
United Kingdom (UK)



Details

Make:	Nimbus
Model:	305 Coupe
Year:	2025
Condition:	New
Engine type:	
Fuel type:	Diesel
Length:	10.07 m (33.04 ft)
Beam:	3.25 m (10.66 ft)
Cabins:	0
Berths:	0



Morgan Marine



7zea.com

Description

EN

Nimbus 305 for Sale

A classic, super-functional Coupe boat with elegant lines - perfect for both weekend getaways and longer journeys. The hull design eliminates the planing threshold to provide comfort and low fuel consumption at speeds up to 22 knots. The Nimbus 305 Coupe is a contemporary, and very functional boat with reduced environmental impact - perfect for an uncomplicated and enjoyable time at sea. The bathing platform, aft deck and saloon are all on one level; for easy movement around the boat. This 2025 model year Nimbus 305 Coupe is in stock at Morgan Marine and available for viewing 7 days a week. Special stock offer - call for details. Note - library photos may not reflect specification of boat. Call us for best stock deals!

Deck: Bathing platform with safety gate, folding ladder, fender storage and self draining storage box. Shower on transom - hot and cold water. Wide and deep sidedeck on starboard side with self draining storage box and door to helm position. The hull, deck and the bulkhead are all vacuum infused with a core of divinycell for increased strength, lightweight and good insulation. Large aft deck with comfortable L-shape sofa for up to 5 people + fixed foldable teak table + extended roof and aft closing canopy. Foredeck area with large cushions and stainless steel open pulpits + bollards and grab rails + bow ladder. Outdoor cushions - quilted - blue. Cleats + midship cleat. Foldable stainless steel mast (for antenna / lights etc) on wheelhouse roof. Self draining deck. Integrated ventilation to improve air circulation and quality. Teak on bathing platform + aft deck + port and starboard side decks + foredeck. Electric anchor windlass. Mooring kit with fenders and ropes.

Cabin: Forward cabin with V-berth + coil mattress. Mid-cabin with double berth and wardrobe. Carpets in cabins. Separate heads compartment with electric flush toilet + blackwater overboard discharge, washbasin and shower. Additional double berth in wheelhouse.

Cockpit: Wheelhouse with glass sliding aft door, roof hatches, starboard side helm door and marine varnished mahogany interior. Panoramic windscreen with wiper + screen wash + defroster + canopy. Safety glass windows (glued in to minimise noise) + blinds. Light and airy saloon on port side - with 4 person dinette table (folds to cocktail table with glass holders). Co-pilot seat folds for use as seating at table. Starboard side galley with ceramic gas cooktop, Corian worktop, lots of storage, 65L fridge + additional fridge and Nimbus exclusive dinner set - for 6 people. Helm position with engine controls and full electronics, compass and ergonomic helm seat (for sitting or standing) with folding footrest - great visibility and anti-reflective surfaces. Teak koto floor.

Electronics: Simrad NSS EVO 3S 12" plotter. Simrad NAC2 autopilot, OP12 control, RF25 rudder feedback + WR10 wireless remote. Simrad RS40 VHF + AIS receiver with HS40 wireless handset. Volvo Penta trip computer + Volvo Penta Easy Connect + Volvo Penta depth / log. 19" TV in wheelhouse. Fusion MS-RA210 stereo with bluetooth + 2x 6" 150w speakers in cabin, 2x 6" 150w speakers on aft deck + USB / aux connector. ChargeMaster 12/35A - shore power and battery charger + 12v socket. Search light with joystick on mast. Extended courtesy lights in cabin and deck saloon. LED navigation lights. Nimbus Connect boat monitoring.

Machinery: Volvo Penta D4-270. Quick BTQ180-55 bow thruster + stern thruster + remote control. Humphree Comfort Package (auto trim, pitch control & auto list). Eberspächer D4 heater & defroster. Isotemp Spa 20L hot water system. Seafire automatic fire-fighting system. Manual and electric bilge pump. Fuel capacity 250L. Water capacity: 150L. Hot water capacity: 20L. Waste capacity: 80L. CE Category B.

General information

Make:	Nimbus
Model:	305 Coupe
Year:	2025
Condition:	New

Engine

Engine type:	
Fuel type:	Diesel

Measurements

Length:	10.07 m (33.04 ft)
Beam:	3.25 m (10.66 ft)
Deep:	0.9 m (2.95 ft)
Weight:	0 ()

Accommodation

Cabins:	0
Berths:	0

Images



Nimbus 305 Coupe Head 1



Nimbus 305 Coupe Cabin 5



Nimbus 305 Coupe Exterior 2



Nimbus 305 Coupe Exterior 4



Nimbus 305 Coupe Exterior 1



Nimbus 305 Coupe Exterior 7



Nimbus 305 Coupe Exterior 12



Nimbus 305 Coupe Exterior 13



Nimbus 305 Coupe Exterior 14



Nimbus 305 Coupe Exterior 3



Nimbus 305 Coupe Exterior 15



Nimbus 305 Coupe Exterior 22



Nimbus 305 Coupe Interior 3



Nimbus 305 Coupe Cabin 1



Nimbus 305 Coupe Cabin 2



Nimbus 305 Coupe Cabin 4



Nimbus 305 Coupe Interior 1



Nimbus 305 Coupe Interior 2



Nimbus 305 Coupe Exterior 21



Nimbus 305 Coupe Exterior 16



Nimbus 305 Coupe Exterior 17



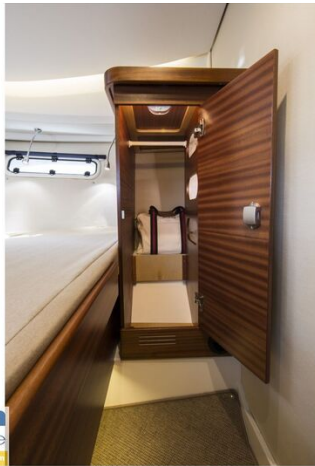
Nimbus 305 Coupe Exterior 18



Nimbus 305 Coupe Side



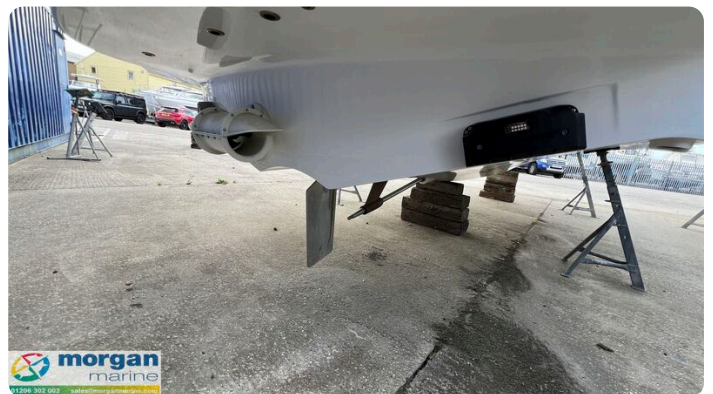
Nimbus 305 Coupe Cabin 3



Nimbus 305 Coupe Cabin 6



Nimbus 305 Coupe Head 2





Morgan Marine

The Boatyard, Shipyard Estate
CO7 0AR Colchester
United Kingdom (UK)

Phone: 44(0)1206302003

<https://morganmarine.com>

