

# Jeanneau SUN MAGIC 44

€35,000 • Adria Italy • Used • 1989

## Presented by

Jan Spengler  
Phone: +49 4101 5155566

**Michael Schmidt &  
Partner Yachthandels  
GmbH**

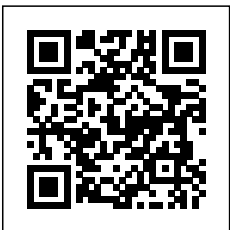
Rübekamp 5  
25421 Pinneberg  
Germany



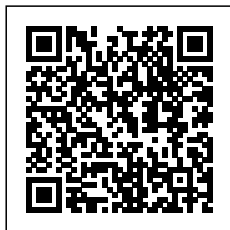
Michael Schmidt & Partner  
International Yachtbrokers

## Details

Make:	Jeanneau
Model:	SUN MAGIC 44
Year:	1989
Condition:	Used
Engine:	Yanmar 4JH-TE, 55 hp
Engine type:	
Fuel type:	Diesel
Fuel tank:	220 ()
Length:	13.33 m (43.73 ft)
Beam:	4.23 m (13.88 ft)
Cabins:	0
Berths:	0



Michael Schmidt &  
Partner Yachthandels  
GmbH



7zea.com

# Description

---

## EN

Epoxy treatment on ballast 7/23  
alternator 12V 6/24  
Diesel tank cleaning 7/22  
Mainsail 6/22, Genoa 5/17  
Boiler 11/2  
Steering bearings 11/21  
refrigerator 7/13  
Replacement upholstery bow and stern cabin  
cradle for winter storage

The teak deck needs attention

Photo documentation available

Schmidt & Partner  
International Yachtbrokers s.r.l.

Piazzetta dell' Imbarcadere 11  
I - 33050 Aprilia Marittima/Latisana (UD)  
Tel.: +39 0431 53711

Navigation equipment:  
Radar Antenna, MeteoFax.

Staging and technical:  
Anchor (+ 80 m 10mm chain/Kette/catena), Water pressure  
pump, Deck Shower, cradle, Fenders, Manual Bilge Pump,  
Seawater Pump, Shorepower connector, Electric Windlass,  
swimming ladder, cockpit table, Tender.

Domestic Facilities onboard:  
Warm Water System, 12V Outlets, 220V Outlets.

Entertainment:  
Speakers, Hi-Fi.

Sails accessories:  
Jib Furling System, Lazy Jack, Backstay tensioner, Mainsheet  
traveller, Vang.

Kitchen and appliances:  
Galley, Burner.

Upholstery:  
Cockpit Cushions, Boat cover.

Accessories notes:  
some halyards, sheets and manouvers new  
Stainless steel protection on the bow stem  
spi pole

## IT

trattamento epossidico sulla zavorra 7/23  
alternatore 12V 6/24  
pulizia serbatoio diesel 7/22  
randa 6/22, genoa 5/17  
boiler 11/2  
boccole timoneria 11/21  
frigorifero 7/13  
tappezzeria sostituita cabina prua e poppa  
invaso  
La coperta in teak necessita attenzione  
documentazione fotografica disponibile

Schmidt & Partner  
International Yachtbrokers s.r.l.

Piazzetta dell' Imbarcadere 11  
I - 33050 Aprilia Marittima/Latisana (UD)  
Tel.: +39 0431 53711

Strumentazione elettronica di navigazione:  
Antenna radar, MeteoFax.

Allestimento tecnico e di coperta:  
Ancora (+ 80 m 10mm chain/Kette/catena), Autoclave, Doccia  
esterna, Invaso, Parabordi, Pompa di sentina manuale, Pompa  
per Acqua di Mare, Presa 220V banchina, Salpa Ancore  
Elettrico, Scaletta da bagno, Tavolo pozzetto, Tender.

Dotazioni domestiche di bordo:  
Boiler, Prese interne 12v, Prese interne 220v.

Intrattenimento:  
Altoparlanti, Stereo.

Accessori Vele:  
Avvolgi Fiocco, Lazy Jack, Tenditore strallo di poppa, Trasto  
randa, Vang rigido.

Cucina ed elettrodomestici:  
Cucina, Fornello.

Tappezzerie:  
Cuscineria Pozzetto, Telo copribarca.

Note accessori:  
alcune drizze, scotte e manovre nuove  
protezione in acciaio inox in prua  
tangone spi

## FR

Traitement époxy sur ballast 23/07  
alternateur 12V 6/24  
Nettoyage du réservoir diesel 22/07  
Grand-voile 22/06, Gênes 17/05  
Chaudière 11/2  
Silents de direction 11/21  
Frigo 13/7  
Remplaçant la sellerie de la cabine avant et arrière  
Réservoir  
Le deck en teck a besoin d'attention  
Documentation photographique disponible

Schmidt & Partner  
International Yachtbrokers s.r.l.

Piazzetta dell' Imbarcadere 11  
I - 33050 Aprilia Marittima/Latisana (UD)  
Tel. : +39 0431 53711

Equipement électronique de navigation:  
Antenne radar, MeteoFax.

Equipement de pont:  
Ancre (+ 80 m 10mm chain/Kette/catena), Eau sous pression,  
Douche de cockpit, Ber, Défenses, Pompe de cale manuelle,  
Pompe à Eau de Mer, Prise de quai, Guindeau électrique,  
Echelle de bain, table de cockpit, Annexe.

Equipement intérieur:  
Ballon d'eau chaude, Prises interieures 12v, Prises interieures  
220v.

Divers:  
Haut-parleurs, Hi-Fi.

Equipement voiles:  
Enrouleur de foc, Lazy Jack, Ridoir de pataras, barre d'écoute,  
halebas.

Equipement de confort:

Cuisine, Cuisinière.

Sellerie et tauds:  
sellerie de cockpit, Housse de bateau.

Notes équipement:  
quelques drisses, d'écoutes et nouveaux gréements  
Garde en acier inoxydable à la proue  
Perche SPI pour spinnaker

DE  
Epoxidbehandlung Gusseisenkiel 7/23  
Lichtmaschine 12V 6/24  
Dieseltankreinigung 7/22  
Großsegel 6/22, Genua 5/17  
Boiler 11/2  
Ruderlager 11/21  
Kühlschrank 7/13  
Kabinentapetezierug Bug- und Heckkabine  
Liegebock

Teakdeck benoetigt Aufmerksamkeit

Fotodokumentation verfügbar

Schmidt & Partner  
International Yachtbrokers s.r.l.

Piazzetta dell' Imbarcadere 11  
I - 33050 Aprilia Marittima/Latisana (UD)  
Tel.: +39 0431 53711

Navigation elektronische Instrumentation:  
Radarantenne, Navtex Empfaenger.

Deck und technische Ausrüstung:  
Anker (+ 80 m 10mm chain/Kette/catena),  
Druckwasserpumpe, Cockpitdusche, Liegebock, Fender,  
manuelle Bilgepumpe, Seewasserpumpe, Landanschluß,  
elektrische Ankerwinde, Badeleiter, Cockpittisch, Beiboot.

Anlagen an Bord:  
Warmwasserbereiter, 12V Steckdose, 220V Steckdose.

Unterhaltung:  
Lautsprecher, Stereoanlage.

Rigg:  
Rollfockanlage, Lazy Jack, Achterstagsspanner,  
Grossschottraveller, Baumniederholer.

Küchen-und Haushaltsgeräte:  
Pantry, Herd.

Polster und Persenninge:  
Cockpitpolster, Bootabdeckung.

Hinweis-Zubehör:  
einige Falls, Schilde und neue Takelage  
Edelstahlschutz im Bug  
Spi-Baum

ES  
Tratamiento epoxi en lastre 23/7  
alternador 12V 6/24  
Limpieza del depósito diésel 22/7  
Vela mayor 22/6, Génova 17/5  
Caldera 11/2  
Bujes de dirección 11/21  
Frigorífico 13/7  
Tapicería de repuesto en la cabina de proa y popa  
Embalse  
La baraja de teca necesita atención  
Documentación fotográfica disponible

Schmidt & Socio  
International Yachtbrokers s.r.l.

Piazzetta dell' Imbarcadere 11  
I - 33050 Aprilia Marittima/Latisana (UD)  
Tel.: +39 0431 53711

Instrumentación electrónica de navegación:  
Antena de radar, Meteo fax.

Equipo técnico y de cubierta:  
Ancla (+ 80 m 10mm chain/Kette/catena), Bomba de agua  
dulce, Ducha externa, cuna de varada, Defensas, Bomba de  
achique manual, Bomba de Agua de Mar, Toma de 220V para  
el puerto, Molinete eléctrico, Escalera de baño, mesa de  
bañera, Auxiliar.

Enseres domesticos de abodo:  
Calentador, Tomas de 12v, Enchufes de 220v.

Entretenimiento:  
Altavoces, Stereo.

Accesorios Velas:  
Enrollador de foque, Lazy Jack, Tensor backstay, Caro de  
escota de mayor, Contra.

Cocina y electrodomésticos:  
Cocina, Fogón.

Tapicerías:  
Cojinería bañera, Funda para barco.

Notas accesorios:  
algunas drizas, escotas y aparejo nuevo  
Guarda de acero inoxidable en la proa  
Palo SPI de spinnaker

NL  
Epoxybehandeling op ballast 7/23  
dynamo 12V 6/24  
Dieseltankreiniging 7/22  
Grootzeil 6/22, Genua 5/17  
Ketel 11/2  
Stuurbussen 11/21  
Koelkast 13/7  
Vervanging van bekleding boeg en achtersteven  
Reservoir  
Teakdek heeft aandacht nodig  
Fotodocumentatie beschikbaar

Schmidt & Partner  
International Yachtbrokers s.r.l.

Piazzetta dell' Imbarcadere 11  
I - 33050 Aprilia Marittima/Latisana (UD)  
Tel.: +39 0431 53711

Elektronische navigatie-instrumenten:  
Radar antenne, Navtex (weerschrijver).

Technische- en dekuitrusting:  
Anker (+ 80 m 10mm chain/Kette/catena), Waterdruk systeem,  
Buitendouche, Stalling bok, Stootwillen, Handmatige  
bilgepomp, Zeewaterpomp, Walaansluiting 230V, Elektrische  
ankerlier, Zwemtrap, Kuiptafel, Bijboot.

Huishoudelijke apparatuur aan boord:  
Warmwater boiler, 12V Stopcontacten, 230V Stopcontacten.

Vermaak:  
Luidsprekers, Stereo.

Accessoires Zeilen:

Rolfok systeem, Lazy-Jack systeem, Achterstagspanner, Grootshoort traveller, Giek neerhouder.

Keuken & Apparatuur:  
Keuken, Fornuis.

Bekleding:  
Kuipkussens, Boothoes.

Opmerkingen over accessoires:  
Enkele vallen, schoten en nieuwe rigging  
Roestvrijstalen bescherming in de boeg  
SPI spinnakerstok

RU  
Эпоксидная обработка балласта 23.07  
генератор 12V 6/24  
Чистка дизельного бака 22.07  
Грот 22.06, Генуя 17.05  
Котёл 11/2  
Рулевые втулки 21.11  
Холодильник 13.07  
Замена обивки носовой и кормовой каюты  
Водохранилище  
Тиковая колода требует внимания  
Доступна фотодокументация

Schmidt & Partner  
International Yachtbrokers s.r.l.

Piazzetta dell' Imbarcadero 11  
I - 33050 Aprilia Marittima/Latisana (UD)  
Тел.: +39 0431 53711

Электронные навигационные приборы:  
антенна РЛС, МетеоФакс.

Техническое оснащение и оснащение палубы:  
Якорь (+ 80 m 10mm chain/Kette/catena), Автоклав,  
внешняя душа, cradle, Отбойники, Ручной трюмный насос,  
Насос для морской воды, Прямая розетка от причала,  
Электрическая якорная лебедка, Трап ванной, соскрит  
table, Тендер.

Бытовое оснащение на борту:  
котлом, Внутренние розетки 12v, Внутренние розетки  
220v.

Развлечения:  
динамиков, Привет-Fi.

Аксессуары паруса:  
Устройство кливер, Джек лениво, Backstay tensioner,  
Mainsheet traveller, Ванг.

Кухня и бытовые приборы:  
Кухня, плитой.

Обивка:  
Кокпит подушки, Чехол для лодки.

Дополнительные примечания:  
некоторые фалы, листы и новая такелажная конструкция  
Нержавеющая стальная защита в носу  
Спинакерный столб SPI

## General information

Make:	Jeanneau
Model:	SUN MAGIC 44
Year:	1989
Condition:	Used

## Engine

Engine:	Yanmar 4JH-TE, 55 hp
Engine type:	
Fuel type:	Diesel
Fuel tank:	220 ()

## Measurements

Length:	13.33 m (43.73 ft)
Beam:	4.23 m (13.88 ft)
Deep:	2.12 m (6.96 ft)

## Accommodation

Cabins:	0
Berths:	0

# Images



\_DSC1434



26



14



7



1



3



4



5



6



8



9



10



11



12



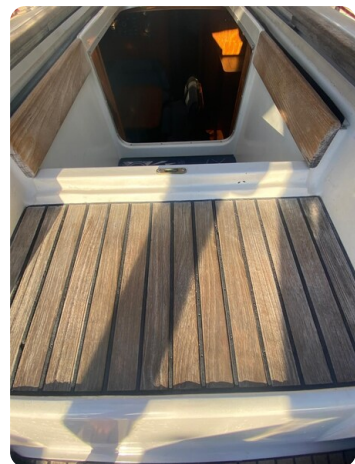
15



16



17



18



19



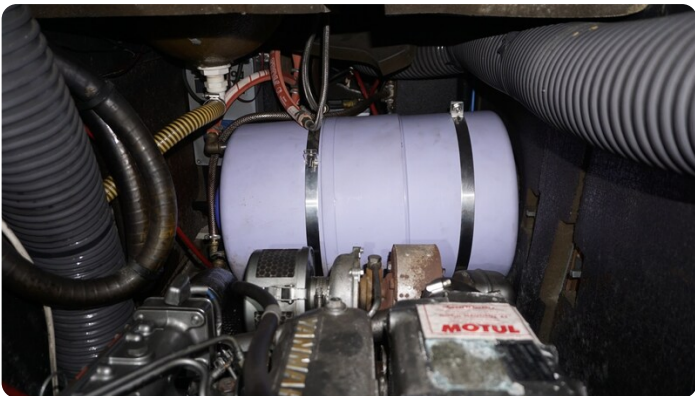
20



22



WhatsApp Image 2026-02-21 at 10.48.27



\_DSC1482



20251004\_131939

**Michael Schmidt & Partner Yachthandels GmbH**

Rübekamp 5  
25421 Pinneberg  
Germany

Phone: +49 4101 5155566

<https://www.msp-yacht.de>



**Michael Schmidt & Partner**  
**International Yachtbrokers**