



Hardy 32 Commander

£94,995 • Brightlingsea United Kingdom (UK) • Used • 2002

Presented by

Peter Marchant
Phone: 44(0)1206302003

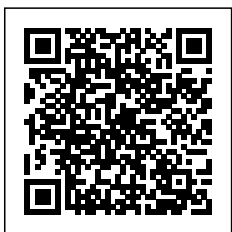
Morgan Marine

The Boatyard, Shipyard
Estate
CO7 0AR Colchester
United Kingdom (UK)

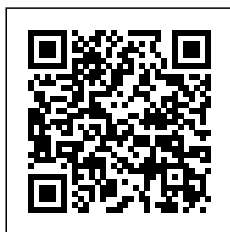


Details

Make:	Hardy
Model:	32 Commander
Year:	2002
Condition:	Used
Engine type:	
Fuel type:	Diesel
Length:	9.75 m (31.99 ft)
Beam:	3.55 m (11.65 ft)
Cabins:	0
Berths:	0



Morgan Marine



7zea.com

Description

EN

2002 Hardy 32 Commander has just arrived at Morgan Marine. A rare opportunity to own a British-built classic. Hardy boats are renowned for their exceptional build quality, impressive power, and remarkable sea-keeping ability, and this model is no exception. Powered by twin Yanmar 6LP-DTE 250HP diesel shaft-drive engines with only 638 hours! She delivers outstanding performance with a top speed of 24 knots and an effortless cruising speed between 18 and 20 knots, making her an ideal choice for days on the water with family and friends. Step inside and you'll immediately notice how spacious she feels for a 32-foot boat. The saloon is bathed in natural light thanks to the panoramic windows and full-width sunroof, creating an open, inviting atmosphere. Smiffy comes exceptionally well equipped, featuring a Lowrance 12-inch Hook chartplotter, Raymarine RL70C chart plotter, Raymarine RAY230E VHF, electric windlass, a generous saloon with comfortable berths, large galley, a fully enclosed canopy, and abundant storage throughout. Recently re-antifouled in October 2025! This is a superbly presented vessel that truly has it all. Contact Morgan Marine today to arrange an early viewing before she's gone.

Deck: GRP hull - re-antifouled in October 2025. Full cockpit enclosure in blue. Stainless steel pulpit and side rails with mid-ship gates. Stainless steel grab rails in cockpit, on wheelhouse roof and on cabin top. Stainless steel and teak bathing platform with extendable bathing ladder. Stainless steel mooring cleats. Electric windlass with anchor, chain and rope. Teak flooring in cockpit. Fenders and lines. Liferaft.

Cabin: Forward V-shaped double berth with infill cushion, storage, and roof hatch. Large saloon U-shaped seating with table which converts into double berth. Galley with twin burner gas hob, grill and oven, twin sink with hot and cold mixer tap, fridge, microwave and lots of storage. Overhead galley locker storage. Good amount of light from large windows. Saloon L shaped cushioned seating with TV. Saloon storage. Large separate compartment with sink, toilet, storage and porthole.

Cockpit: Large cockpit area with teak decking. Cockpit cushioned seating with table. Removable personalised deck chairs for extra seating. Deck locker. Pilot station with pilot chair, all-round windows, dash with engine controls and throttle. Divided hatches offering excellent access to the engines, gearboxes, stern glands, raw water filters, diesel filters, batteries, battery charger, sea cocks. Engine gauges on dash including - temperature, RPM, and oil pressure. Large cockpit storage locker.

Electronics: Lowrance 12inch hook chartplotter. Raymarine RL70C Chart plotter. Raymarine RAY230E VHF. Raymarine ST60 Tridata. Horn. Large glass electric sliding sunroof. Water and fuel gauges. Cabin lights. Saloon lights. Cockpit lights. Navigation lights. Anchor light. Automatic and manual bilge pump. Windscreen wipers with screen wash. 12v socket. Switch panel.

Machinery: Twin Yanmar 6LP-DTE 250HP diesel shaft drive engines. Bow and stern thruster. Twin fuel tank capacity - 436 Litres. Holding tank capacity - 218 Litres. Water tank capacity - 336 Litres.

General information

Make:	Hardy
Model:	32 Commander
Year:	2002
Condition:	Used

Engine

Engine type:	
Fuel type:	Diesel

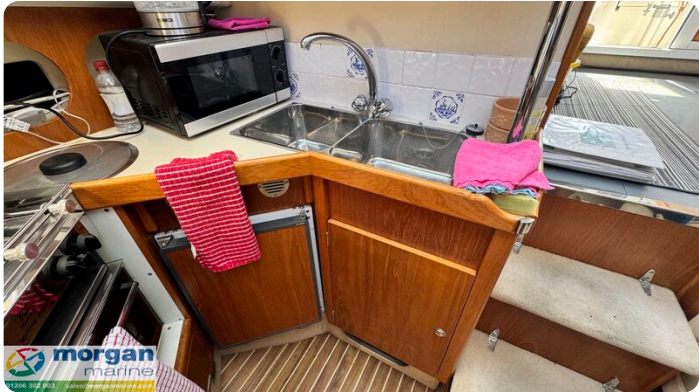
Measurements

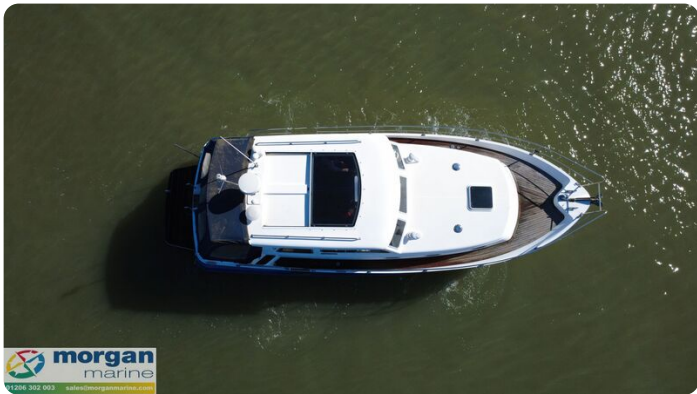
Length:	9.75 m (31.99 ft)
Beam:	3.55 m (11.65 ft)
Deep:	0.92 m (3.02 ft)
Weight:	0 ()

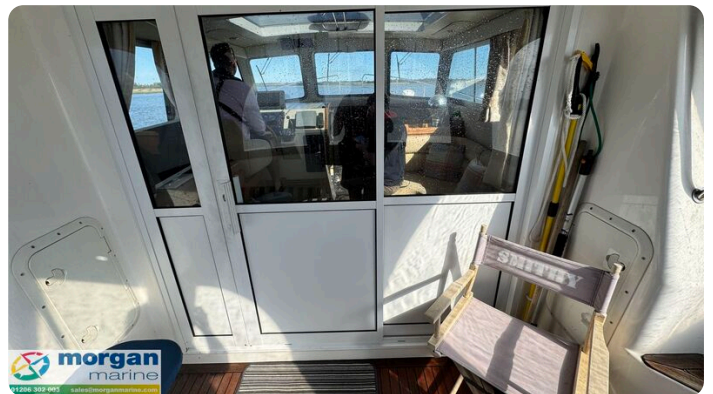
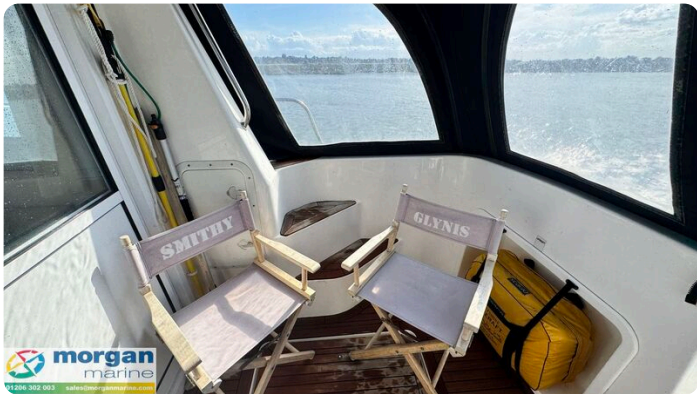
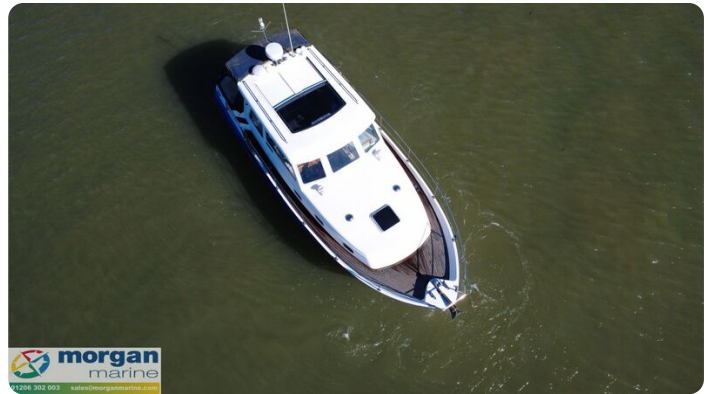
Accommodation

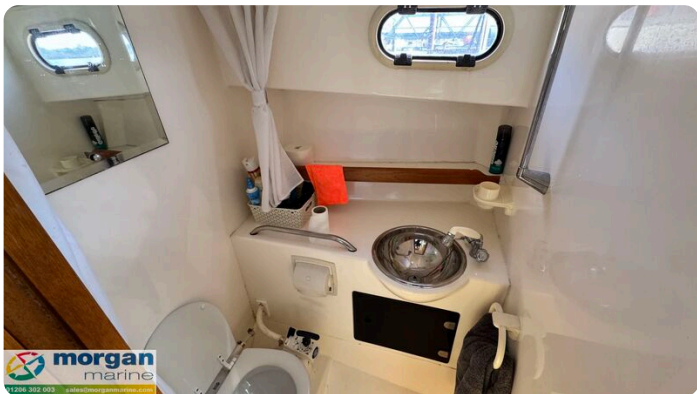
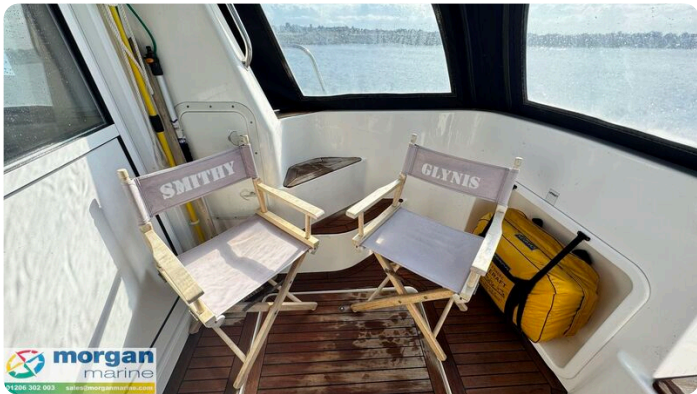
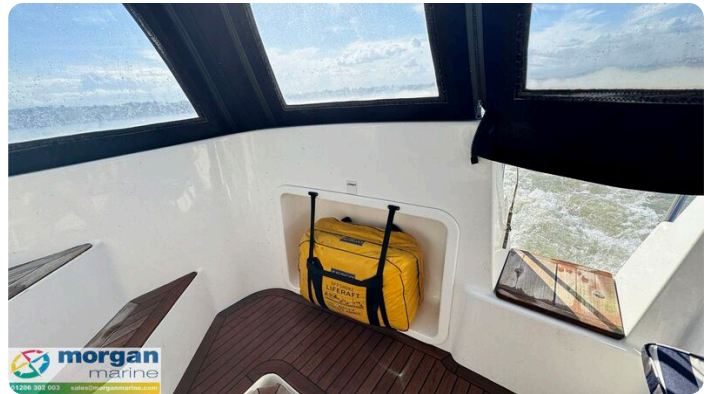
Cabins:	0
Berths:	0

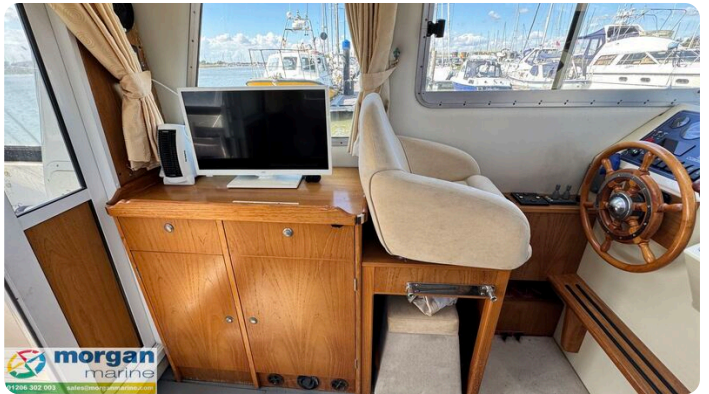


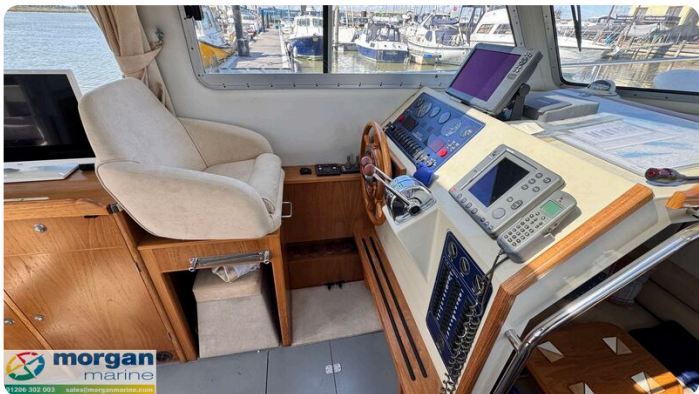


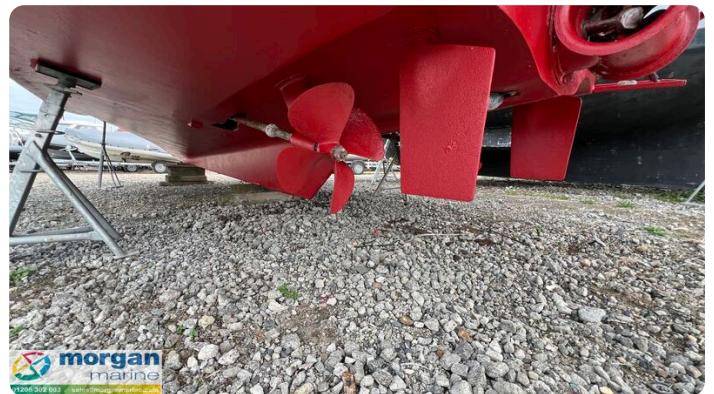


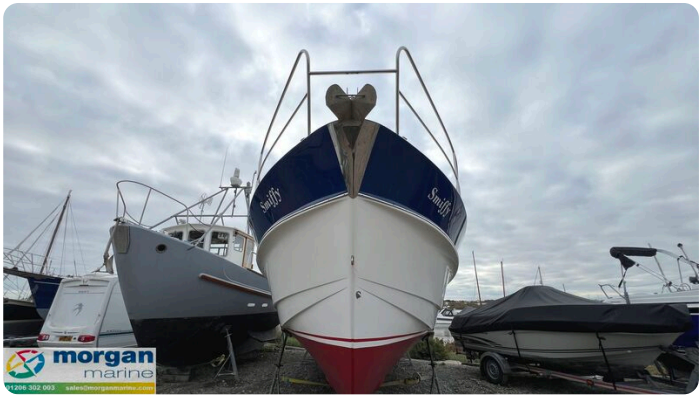












Morgan Marine

The Boatyard, Shipyard Estate
CO7 0AR Colchester
United Kingdom (UK)

Phone: 44(0)1206302003

<https://morganmarine.com>

