



Hanse 400

£89,950 • Essex United Kingdom (UK) • Used • 2007

Presented by

Peter Marchant
Phone: 44(0)1206302003

Morgan Marine
The Boatyard, Shipyard
Estate
CO7 0AR Colchester
United Kingdom (UK)

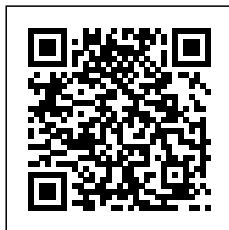


Details

Make:	Hanse
Model:	400
Year:	2007
Condition:	Used
Engine type:	
Fuel type:	Diesel
Length:	11.99 m (39.34 ft)
Beam:	4.04 m (13.25 ft)
Cabins:	0
Berths:	0



Morgan Marine



7zea.com

Description

EN

A nicely presented 2007 Hanse 400 Le Bot, this one owner yacht has been exceptionally well cared for from new and offers an excellent opportunity to acquire a proven, comfortable cruising vessel. Designed by Judel / Vrolijk & Co, she combines performance, style, and ease of handling, featuring a fin keel and responsive wheel steering that make her equally suited to coastal cruising or longer passages. Below deck, the yacht provides a spacious and inviting interior layout, including three generous double cabins and two separate heads compartments, ideal for family use or accommodating guests. The large galley is well arranged for practical onboard living, while the bright U-shaped saloon creates a comfortable and sociable central space. This boat is well equipped, powered by a reliable Yanmar 3JH4 40HP inboard diesel engine with sail drive. Additional features include Webasto diesel heating for extended season cruising, a bow thruster for easy manoeuvring, Garmin chart plotter, Icom VHF radio, and Simrad AP16 autopilot. Shore power is also fitted. On deck, she carries a mainsail with stack pack and a self-tacking jib, ensuring straightforward sail handling. A superb all round cruiser ready to go.

Deck: GRP hull. Fin keel - performance composite iron lead keel. Stainless Steel keel bolts. Fenders and lines. Bow fender. Seago 4 person life raft. Original standing rigging with regular inspection. Running rigging updated on a as needed basis. Full cockpit enclosure (2023). Main sail with cover (2017). Self tacking jib. 2x electric winches. 130 percent Genoa. Spinnaker and snuffer pole. Steps to mast. Bimini frame with cover. Stainless Steel wire guard rails. Pushpit and pulpit. Anchor locker with electric windlass, anchor, chain and rope. Bow roller. Stainless Steel mooring cleats. Spray hood. Boarding ladder. Deck handles. Life horseshoe ring. Teak decking on cockpit.

Cabin: Steps down into cabin area. U-shaped saloon setting with cushions and backrest. Saloon fold down table. TV in saloon area. Storage lockers in saloon. Galley area with 2x Stainless Steel sink, fridge, cool box, Dometic oven, gas stove, large worktop area, wine rack, wine glass holders and storage. Port side 2x person director chair seating with navigation table. Forward double berth cabin with good headroom, mattress, deck to hatch, and storage. Aft port and starboard double berths with mattress, wardrobes and storage. Forward head compartment with toilet, sink and storage. Aft head compartment with toilet, sink, storage and shower. Both hot and cold water. Both heads have holding tank. Interior lights. Barometer clock.

Cockpit: Bespoke step to aide access from the pontoon. Large cockpit area. Cockpit bench style seating with removable cockpit seat cushions. Folding table on deck with bespoke binnacle to give a clear view of navigation equipment. Steering wheel with cover. Instrument covers.

Electronics: Garmin chart plotter 2024 on bespoke pedestal. Icom VHF radio. Wireless Windex (2024). AIS transceiver. Simrad AP16 autopilot. Simrad IS12 Combi. B & G Triton. Solar panel. Radio CD player. Shore power with lead. 13 Amp power sockets. Navigation lights. Anchor light. Switch panel. Domestic water heater, running from engine. Immersion heater for shore power use.

Machinery: Yanmar 3JH4, 29 kW / 40 HP sail drive inboard diesel engine. 3 Blade folding propeller. Engine room sound insulated. Webasto diesel heating system - heating vents replaced in 2021. Bow thruster. New batteries. Engine serviced in 2025. Fuel tank stainless steel fuel capacity - 140 litres. Water capacity - 300 litres. 2x holding tanks - 18 litres. Auxiliary bracket.

General information

Make:	Hanse
Model:	400
Year:	2007
Condition:	Used

Engine

Engine type:	
Fuel type:	Diesel

Measurements

Length:	11.99 m (39.34 ft)
Beam:	4.04 m (13.25 ft)
Deep:	1.98 m (6.50 ft)

Accommodation

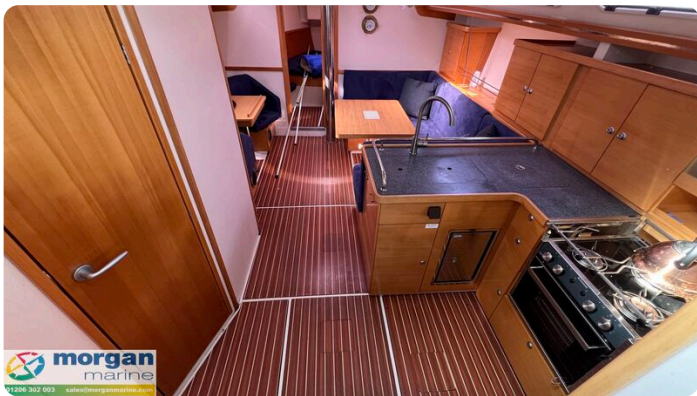
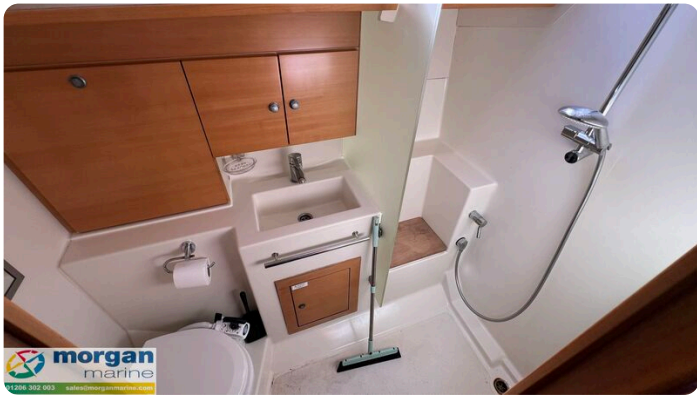
Cabins:	0
Berths:	0

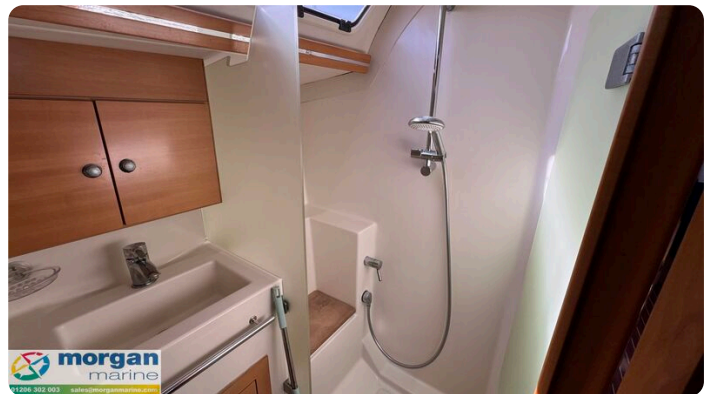
Images

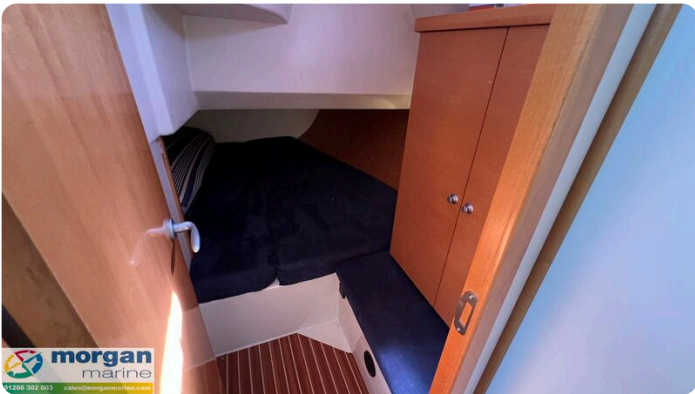












Morgan Marine

The Boatyard, Shipyard Estate
CO7 0AR Colchester
United Kingdom (UK)

Phone: 44(0)1206302003

<https://morganmarine.com>

