



# Halmatic Arctic 22 RIB

£5,995 • Brightlingsea United Kingdom (UK) • Used • 0

## Presented by

Peter Marchant  
Phone: 44(0)1206302003

**Morgan Marine**  
The Boatyard, Shipyard  
Estate  
CO7 0AR Colchester  
United Kingdom (UK)



## Details

Make:	Halmatic Arctic
Model:	22 RIB
Year:	0
Condition:	Used
Engine type:	
Fuel type:	Gasoline
Length:	6.71 m (22.01 ft)
Beam:	2.13 m (6.99 ft)
Cabins:	0
Berths:	0



Morgan Marine



7zea.com

# Description

EN

Now available at Morgan Marine, this rugged Halmatic Arctic 22 RIB, powered by a sought-after 1998 Mercury 200hp 2.5-litre V6 Offshore 2-stroke outboard! A rare and increasingly hard-to-find engine known for its raw power, simplicity, and reliability. Two-stroke offshore engines like this are becoming scarce, making this an exciting opportunity for enthusiasts who appreciate performance and character. Finished with a GRP orange hull and grey Hypalon tubes, this boat offers a solid and safe platform with classic RIB capability. While the cosmetics are not in perfect condition and show signs of age and use, the boat remains powerful, capable, and seaworthy – ideal for fishing, coastal adventures, or a project boat for someone wanting performance at an affordable price. This Halmatic Arctic 22 comes complete with a Superspeed 2-wheel 1500kg trailer featuring a jockey wheel, winch, hitch, and lightboard, as well as a Garmin Echo 201 Fishfinder and Cobra Marine VHF radio. It has comfortable pilot and co-pilot seats, a manual windlass with anchor, chain, and rope mounted at the front of the console, and fishing rod holders, making it ready for action straight away. This is not a showroom boat cosmetically, but it offers serious performance, safety, and value for someone looking for a tough, capable RIB.

Deck: GRP orange hull with grey Hypalon tubes. Mooring cleats. Rope handles. Grab handles. A-frame. Manual windlass with anchor, chain and rope on front of console. Oars. Fishing rod holders.

Cabin: N/A

Cockpit: Console with steering wheel and engine controls. Pilot seat with backrest. Co-pilot 2 person bench seat behind with backrest and storage underneath.

Electronics: Garmin Echo 201 Fishfinder. Cobra Marine VHF radio. Spotlight. Navigation lights. Anchor light. Bilge pump. Compass.

Machinery: 1998 Mercury 200 2.5-litre V6 offshore 2 stroke outboard engine with power trim and tilt. New impeller fitted February 2026.

Trailer: Superspeed 2 wheel 1500kg trailer with jockey wheel, winch, hitch and lightboard. NB - the road trailer may not be in serviceable road worthy condition. It is recommended the buyer should inspect and service accordingly prior to use on public roads.

## General information

Make:	Halmatic Arctic
Model:	22 RIB
Year:	0
Condition:	Used

## Engine

Engine type:	
Fuel type:	Gasoline

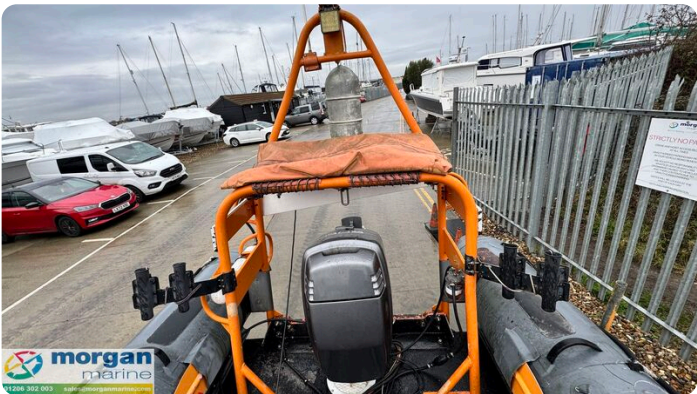
## Measurements

Length:	6.71 m (22.01 ft)
Beam:	2.13 m (6.99 ft)
Deep:	0.3 m (0.98 ft)

## Accommodation

Cabins:	0
Berths:	0

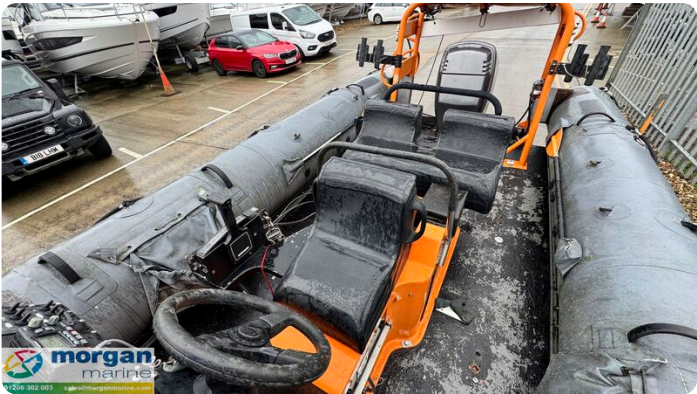
















**Morgan Marine**

The Boatyard, Shipyard Estate  
CO7 0AR Colchester  
United Kingdom (UK)

Phone: 44(0)1206302003

<https://morganmarine.com>

