



Fairline Targa 52

£299,950 • Weymouth United Kingdom (UK) • Used • 2005

Presented by

Justin Garwell
Phone: +44 (0) 1305 766504

JD YACHTS LIMITED
80 THE ESPLANADE
DT4 7AA WEYMOUTH
United Kingdom (UK)



Details

Make:	Fairline
Model:	Targa 52
Year:	2005
Condition:	Used
Engine:	Volvo Penta D12-715, 715 hp
Engine type:	
Fuel type:	Diesel
Length:	16.22 m (53.22 ft)
Beam:	4.27 m (14.01 ft)
Cabins:	0
Berths:	0



JD YACHTS
LIMITED



7zea.com

Description

ENG
2005. 2 x 715 HP Volvo Penta D12-715
4 berths in 2 cabins
Lying: Weymouth UK

ENG
Extras

Raymarine gS-Series MFD Chartplotter
Raymarine Raydome
Raymarine p70Rs Autopilot Head Unit
Raymarine i70s MFD
iCOM VHF
Bow & Stern Thrusters
Hydronautica Yacht Controller
Onan 13.5kVA Generator
Reverse Cycle Air Conditioning
Eberspacher Diesel Heating
Bespoke Hardtop Windows
Lifting TV to Cockpit
Lifting TV to Saloon
Passerelle
Holding Tank

Standard Specification

Hullform And Construction

All gel coat and glass fibre hand laid with unidirectional, biaxial and woven rovings Antifouling protection to hull
Deep 'V' forward; 20° deadrise aft
Designed by Bernard Olesinski and the Fairline design team
Full length moulded spray deflectors
Hull/deck join bolted and bonded
Integrally moulded engine bearers
Isophthalic gel coat backed by isophthalic resin-rich powder-bound glass mat
The deck incorporates polyurethane foam cores for high strength and excellent thermal insulation
The integral bathing platform gives the boat a longer waterline length for improved performance, particularly at reduced power settings
The propellers are set in semi-tunnels enabling the engines to be located further aft, also reducing draught and improving efficiency by reducing the shaft angle
Transverse and longitudinal strengthening stringers throughout hull

Deck

Anchor chain locker
Anchor winch (electric)
Anchor winch controls
Calibrated anchor chain
Concealed telescopic swim ladder to bathing platform
Full set of IMCO navigation lights
Garage with winch system for concealed stowage of optional Jet RIB or PWC beneath aft sundeck
Hot and cold water transom shower
Life raft stowage
Moulded non-slip deck surface
Recessed self-draining area on foredeck with coachroof sun cushions
'Reticulated' non-absorbent foam cushions for forward and aft sundeck
Remote control searchlight
Riding light
Rubbing strake
Self-stowing through-hull Delta® anchor

Stainless steel bow fairlead(s)
Stainless steel bow, spring and stern cleats
Stainless steel handrails
Stainless steel hull protection plate under bow
Stainless steel pulpit
Teak-laid bathing platform
Toughened glass curved windscreen
Transom gate from cockpit to integral bathing platform
Twin horns
Water filler(s)
Windscreen washers
Windscreen wipers

Helm Position

12v socket
Adjustable/tilt steering wheel
Bilge pump switches with integral operating warning lights and audible alarms
Bolstered helm seat(s)
Bowthruster controls
Chart table and light
Controls for engine bay fire extinguisher system
Drinks holders
Echosounder and speedometer/distance log repeater(s) with sea water temperature read out
Electronic single-lever throttle and gear controls
Folding foot plinth
Fuel gauges
Full engine instrumentation including; tachometers, oil pressure gauges, temperature gauges, battery condition indicators, audible alarms and engine hour meters
GPS chartplotter interfaced with autopilot
Helm position indicator
High speed magnetic compass
Powered steering
Raymarine E120 navigation display
Remote anchor winch controls
Searchlight controls
Trim tab controls
VHF radio telephone
Waterproof switches for navigation and riding lights, windscreen wipers and engine bay extractor fan(s)

Cockpit

12v heavy duty weatherproof socket
Access via transom deck to port and starboard side decks
Aft cockpit hood with clear panels and zipped doorway
Bathing platform lights
Central dining area
Cockpit bar with refrigerator, sink, hot and cold water, insulated coolbox
Companion seating to helm
Drinks holders
Engine bay access hatch with stainless steel pneumatic support struts, independent of the tender garage
Fender stowage
Glove locker
Manual bilge pump(s)
Refrigerated coolbox to cockpit bar
Stainless steel handrails
Stowage lockers under cockpit seats
Teak-laid floor throughout self-draining cockpit
Warning light and audible alarm during garage door operation
Warp lockers

Main Saloon

Access to day heads
Aerial and connections for television
Bar unit

Control panel for 12v/24v/240v domestic electrical circuits
 Cocktail table converts to dining table with additional stools
 Deck hatch with flyscreen and blind
 DVD/CD/radio with 2 speakers in saloon and 2 waterproof speakers in cockpit
 Full-height standing headroom
 Handrail
 Halogen ceiling lights
 LCD TV
 Lockers (overhead)
 Mood lighting
 Sliding door to cockpit with integral blind system
 Sofa
 Stainless steel opening porthole(s) with flyscreen
 Stowage lockers under dinette seating
 Underfloor stowage hold

Galley

Crockery stowage
 Electric ceramic/halogen hob
 Extractor fan
 Work surface with covers
 Halogen ceiling lights
 Integrated waste bin
 Lacquered cupboard doors
 Lockers (overhead)
 Microwave oven
 Random teak floor
 Refrigerator 4.6cu.ft. (130L) with automatic 12v/240v change-over
 Stainless steel opening porthole(s) with flyscreen
 Twin sinks with hot and cold mixer tap
 Towel rail
 Work surface lights

Master Cabin

Access to en suite bathroom
 Bedside stowage
 Drawer(s) under bed
 Dressing table with vanity stowage
 Full-height standing headroom
 Halogen ceiling lights
 Large hatch with flyscreen and concealed blinds to foredeck
 Lockers (overhead)
 Mirror
 Moulded stowage locker under hinged bedboard
 Oversized double bed
 Stainless steel opening porthole(s) with flyscreen
 Upholstered bedhead
 Wardrobe(s)

Master En Suite Bathroom

220v/240v shaving point
 Automatic shower tray pump-out system
 Electric silent-flush freshwater toilet
 Extractor fan
 Avonite® vanity unit locker and basin with hot and cold pressurised water
 Full standing height circular shower with rotating screen
 Halogen ceiling lights
 Mirror
 Stainless steel opening porthole(s) with flyscreen

Starboard Guest Cabin

Bedside stowage
 Drawer(s) under bed
 Full length berths x 2
 Halogen ceiling lights
 Mirror
 Stainless steel opening porthole(s) with flyscreen
 Upholstered bedheads
 Wardrobe(s)

Port Guest Cabin

Bedside stowage
 Drawer(s) under bed
 Full length berths x 2
 Halogen ceiling lights
 Mirror
 Stainless steel opening porthole(s) with flyscreen
 Upholstered bedheads
 Wardrobe(s)

Shower/wc Compartment

220v/240v shaving point
 Automatic shower tray pump-out system
 Electric silent-flush freshwater toilet
 Avonite® vanity unit locker and basin with hot and cold pressurised water
 Full set of bathroom fittings
 Full standing height circular shower with rotating screen
 Mirror
 Stainless steel opening porthole(s) with flyscreen

Electrical Systems

All 240v, 24v and 12v circuits (where applicable) protected by circuit breakers with main electrical load control panel
 Electrical sockets
 Heavy duty circuit breakers
 Isolating switches to all batteries
 Onan generator 7kVA
 24 Volt:
 Batteries - 2 x 180Ah exclusively for starboard engine starting
 Batteries - 4 x 180Ah wired in parallel supplying domestic services and port engine starting
 Circuit breaker 80amp for anchor winch
 Circuit breaker for bowthrustrer 300amp
 Emergency battery coupling system permits each engine to start from opposite engine battery bank
 240 Volt:
 Polarity check and earth leakage protection system
 Regulated 75amp charger for domestic batteries

Engines And Sterngear

Aerodynamically designed engine air intakes
 Automatic bilge pumps for forward bilge, engine bay and rudder bay with manual 'on' override
 Automatic engine bay fire extinguisher system
 Balanced rudders
 Cathodic protection
 Dripless shaft seals
 Electro-hydraulic trim tabs with cathodic protection
 Engine room soundproofing
 Electric engine bay fan(s)
 Engine bay lights
 Exhaust overheat warning system
 High capacity emergency manual bilge pump system with changeover valves
 Manganese bronze 'P' brackets
 Manganese bronze propellers contra-rotating
 Sea cocks on all inlets/outlets below waterline
 Stainless steel alloy shafts
 Water cooled through-hull engine silencers

Fuel System

Changeover valve system to permit each engine to draw fuel from, and return fuel to, either tank
 Emergency fuel shut-off valves
 High capacity water separators and fuel filters
 Individual fillers and vents to port and starboard
 Marine grade alloy fuel tanks x 2

Freshwater System

Automatic, pressurised supply
Calorifier hot water system
Water tank(s)

General information

Make:	Fairline
Model:	Targa 52
Year:	2005
Condition:	Used

Engine

Engine:	Volvo Penta D12-715, 715 hp
Engine type:	
Fuel type:	Diesel

Measurements

Length:	16.22 m (53.22 ft)
Beam:	4.27 m (14.01 ft)
Deep:	1.09 m (3.58 ft)
Weight:	16450 ()

Accommodation

Cabins:	0
Berths:	0

Images



Image courtesy of JD Yachts



Image courtesy of JD Yachts



Image courtesy of JD Yachts



Image courtesy of JD Yachts



Image courtesy of JD Yachts



Image courtesy of JD Yachts



Image courtesy of JD Yachts



Image courtesy of JD Yachts



Image courtesy of JD Yachts



Image courtesy of JD Yachts



Image courtesy of JD Yachts



Image courtesy of JD Yachts



Image courtesy of JD Yachts



Image courtesy of JD Yachts



Image courtesy of JD Yachts



Image courtesy of JD Yachts



Image courtesy of JD Yachts



Image courtesy of JD Yachts



Image courtesy of JD Yachts



Image courtesy of JD Yachts



Image courtesy of JD Yachts



Image courtesy of JD Yachts



Image courtesy of JD Yachts



Image courtesy of JD Yachts

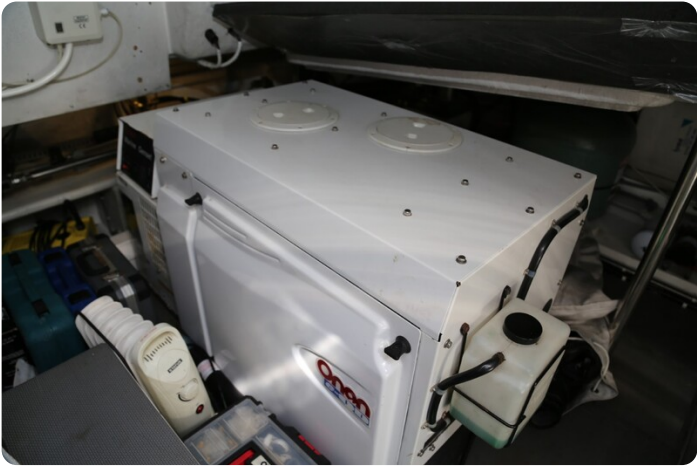


Image courtesy of JD Yachts

JD YACHTS LIMITED

80 THE ESPLANADE

DT4 7AA WEYMOUTH

United Kingdom (UK)

Phone: +44 (0) 1305 766504

<http://jdyachts.com>



 YACHTS.