



Fairline Targa 33

£54,995 • Brightlingsea United Kingdom (UK) • Used • 1988

Presented by

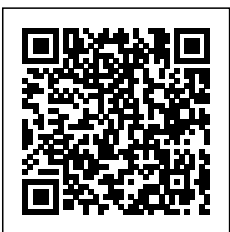
Peter Marchant
Phone: 44(0)1206302003

Morgan Marine
The Boatyard, Shipyard
Estate
CO7 0AR Colchester
United Kingdom (UK)



Details

Make:	Fairline
Model:	Targa 33
Year:	1988
Condition:	Used
Engine type:	
Fuel type:	Diesel
Length:	10.06 m (33.01 ft)
Beam:	3.48 m (11.42 ft)
Cabins:	0
Berths:	0



Morgan Marine



7zea.com

Description

EN

We are pleased to offer this well presented 1988 Fairline Targa 33, a classic and highly regarded cruiser that has just arrived at Morgan Marine. This boat has been reconditioned over the past few years at a cost of circa £70,000 and is powered by twin reconditioned Volvo Penta AD41B inboard diesel engines, with full invoices available to show the work carried out, providing reassurance and peace of mind for the next owner. Designed with both comfort and practicality in mind, this Targa 33 features a full enclosed cockpit canopy with standing headroom, making it ideal for extended cruising in all weather conditions. Handling and berthing are made easy thanks to electric trim tabs and an electric windlass, while shore power and diesel heating enhance onboard comfort for weekends away or longer stays afloat. Below deck, the spacious interior offers 4 berths, a separate toilet compartment, a large galley area, and a bright saloon with a U-shaped seating arrangement, perfect for relaxing or entertaining guests. Navigation is well covered with a Raymarine chart plotter and VHF radio. The Fairline Targa 33 is renowned for its solid build quality, excellent sea-keeping, and practical layout, making this example a superb opportunity for anyone looking for a capable and comfortable cruiser. Contact Morgan Marine today for early viewings!

Deck: Full enclosed canopy with standing headroom. GRP hull. Mooring cleats. Fenders and lines. Walk around side decks to large bow area with pulpit. New electric windlass with anchor, chain and rope. Swim platform with folding boarding ladder. Stainless steel Radar scanner mounting bracket. Stainless Steel guard rails. Fender basket holders on stern bathing platforms. Bow sun bathing removable cushions.

Cabin: Main forward V-berth with hatch. Starboard side aft double berth with storage and window. Toilet compartment with toilet, sink with shower and porthole. Galley with twin sinks, electric hob, oven, fridge, large amounts of storage and good amounts of worktop space. Forward U-shaped saloon cushioned seating. Steps down into saloon area. Good headroom. Stainless Steel ventilation grills.

Cockpit: Cockpit canopy with full standing headroom. Large Lazarette engine bay. L-shaped re upholstered cushioned seating with storage. Folding door to cabin area. Bench style pilot seating with dash, and engine controls. Co-pilot bench.

Electronics: Raymarine Axiom chart plotter. Raymarine VHF radio. New Wema engine gauges (battery voltage x2, temperature x2, oil PSI x2, RPM x2, 1x rudder indicator, 1x fuel gauge,""). Horn. Electric trim tabs. Electric windscreen wipers. Navigation lights. Anchor light. Interior lights. 240v Shore power. USB sockets. Electric and automatic bilge pumps.

Machinery: Twin Volvo Penta AD41B inboard diesel engines reconditioned in January 2022 - Full invoices for this. Diesel heating system throughout boat. Fuel capacity - 850 Litres. Water capacity - 400 Litres. Fibreglass holding tank.

General information

Make:	Fairline
Model:	Targa 33
Year:	1988
Condition:	Used

Engine

Engine type:	
Fuel type:	Diesel

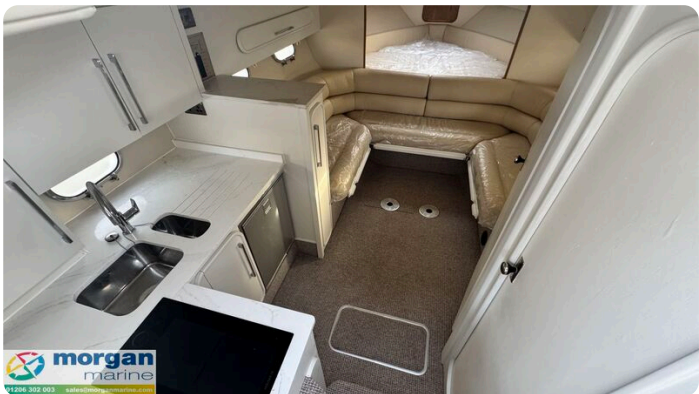
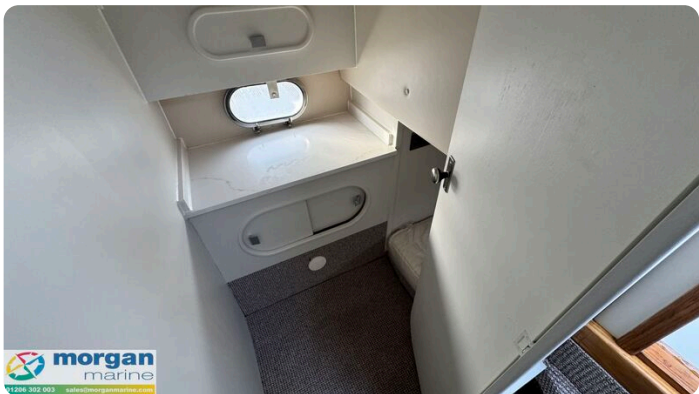
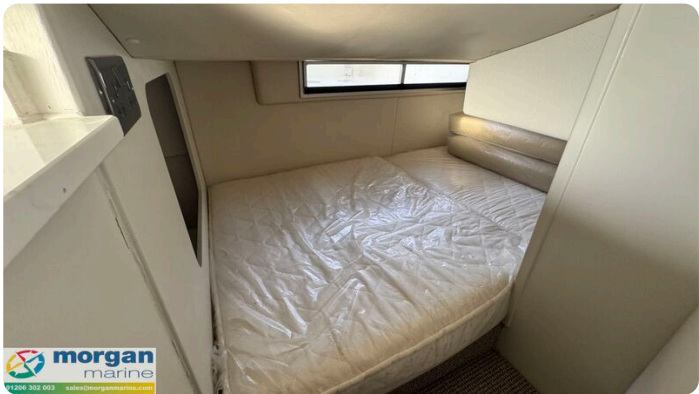
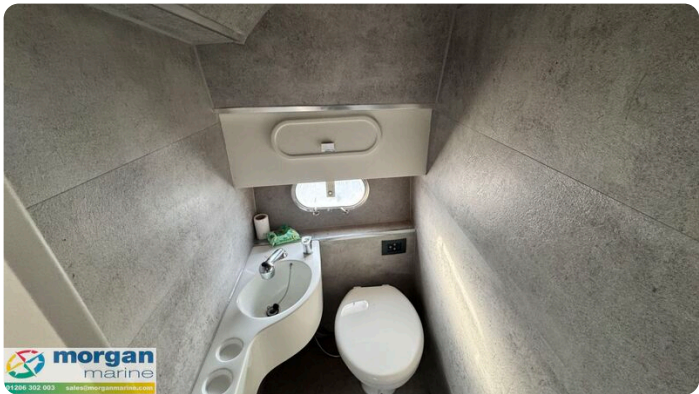
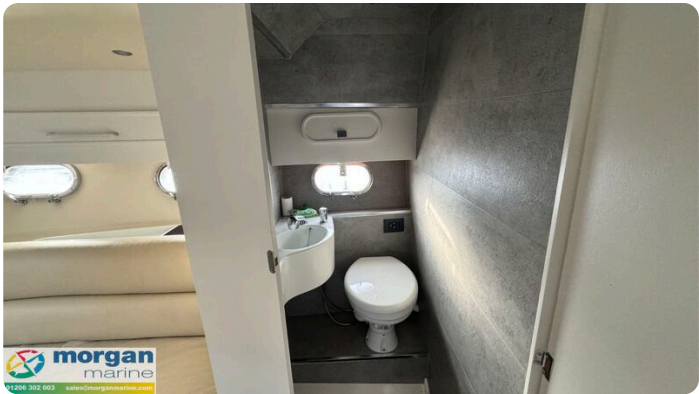
Measurements

Length:	10.06 m (33.01 ft)
Beam:	3.48 m (11.42 ft)
Deep:	0.9 m (2.95 ft)

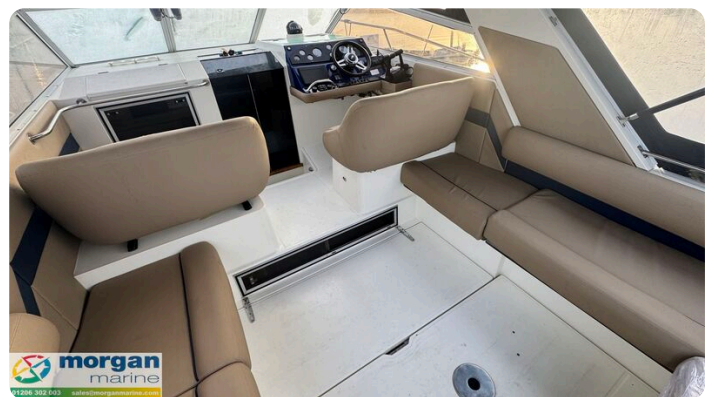
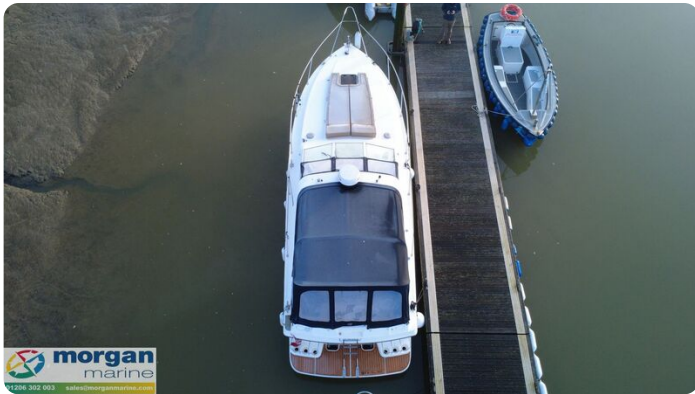
Accommodation

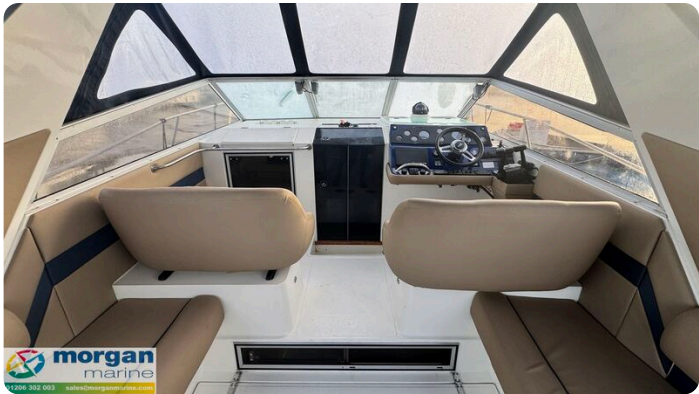
Cabins:	0
Berths:	0

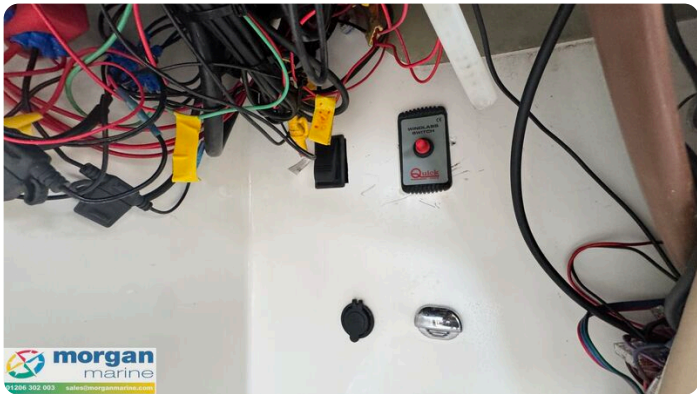














Morgan Marine

The Boatyard, Shipyard Estate
CO7 0AR Colchester
United Kingdom (UK)

Phone: 44(0)1206302003

<https://morganmarine.com>

