



Colvic UFO 31 Masthead Sloop

£4,995 • Brightlingsea United Kingdom (UK) • Used • 1979

Presented by

Peter Marchant
Phone: 44(0)1206302003

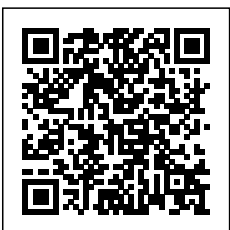
Morgan Marine

The Boatyard, Shipyard
Estate
CO7 0AR Colchester
United Kingdom (UK)

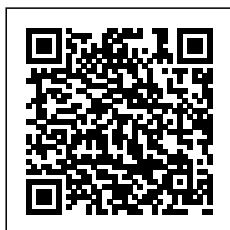


Details

Make:	Colvic
Model:	UFO 31 Masthead Sloop
Year:	1979
Condition:	Used
Engine:	, 300 hp
Engine type:	
Fuel type:	Diesel
Length:	9.41 m (30.87 ft)
Beam:	3.06 m (10.04 ft)
Cabins:	0
Berths:	0



Morgan Marine



7zea.com

Description

EN

1979 Colvic UFO 31 Masthead Sloop just in at Morgan Marine. Designed by industry renowned Holman and Pye, the Colvic UFO 31 sailboat range was built between 1976 and 1981. Light, stable and stiff, this boat is a fast and very seaworthy sailboat, designed for both sporty performance and comfortable cruising. This yacht offers a surprising spacious and well thought out interior, ideal for longer trips. Thanks to its solid construction and excellent sailing characteristics, the UFO 31 is a reliable and good sailing yacht. Early viewing is a must!

Cabin: Large saloon area with 2 settees and 2 pilot berths, Forepeak with 2 berths both with foam mattresses and cushions. Forward berth with deck hatch. Hanging wardrobe and lots of deep lockers and shelves. Toilet compartment with sink and sea toilet. Galley with Dometic 2 burner with oven stove, sink and storage. 2x Fire extinguishers and fire blanket.

Cockpit: Bench style seating cockpit with 4x cockpit lockers with storage. Tiller steering. Sliding hatch to enter saloon.

Electronics: Lowrance Link 8 VHF radio connected with Lowrance chartplotter / GPS (charts out of date). Radar reflector. Raymarine tiller pilot. Oil extractor. 2 starter and 1 leisure batteries with 100W solar panel and charger unit. Internal speakers and amplifier with jack input. NASA instruments - depth and wind (Wind speed instrument needs servicing and water speed needs replacing.) Compass. Hand held fog horn.

Machinery: Yanmar 2GM20FC 18hp diesel inboard engine with 2 cylinders and SD20 sail drive unit. Fixed prop. Engine of unspecified running hours, but has not been heavily used by the owner as sailing is preferred to motoring. Engine has been reliable and runs cleanly. Fuel tank capacity - 40 Litres.

General information

Make:	Colvic
Model:	UFO 31 Masthead Sloop
Year:	1979
Condition:	Used

Engine

Engine:	, 300 hp
Engine type:	
Fuel type:	Diesel

Measurements

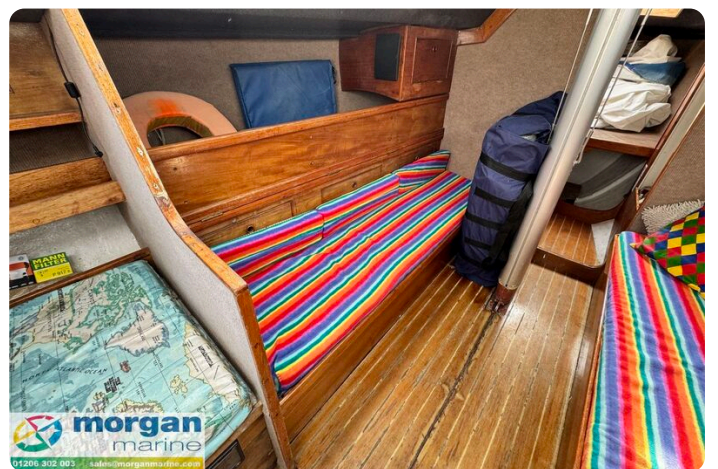
Length:	9.41 m (30.87 ft)
Beam:	3.06 m (10.04 ft)
Deep:	1.68 m (5.51 ft)
Weight:	0 ()

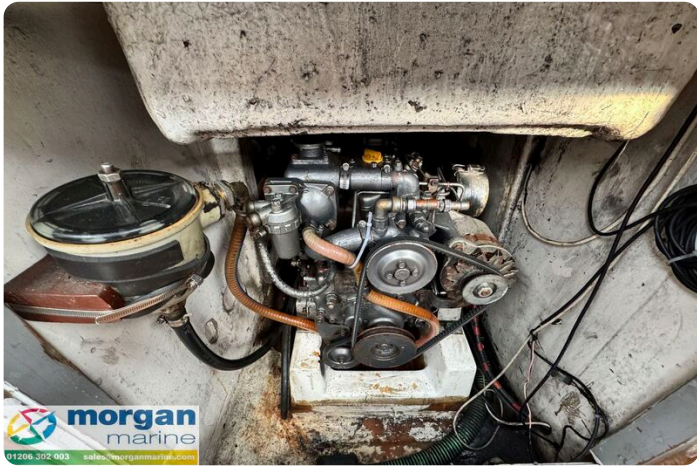
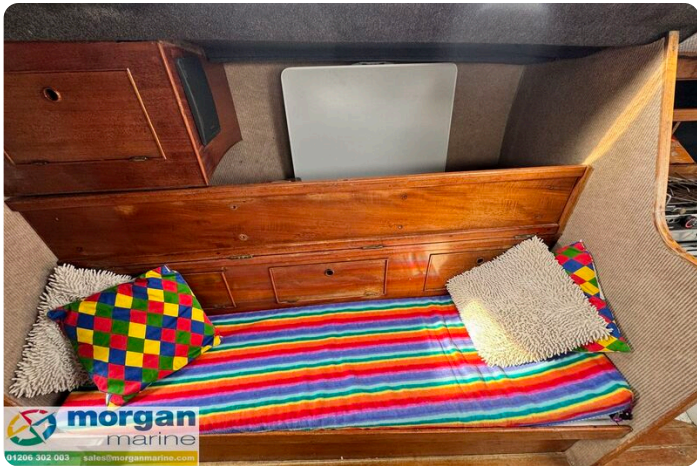
Accommodation

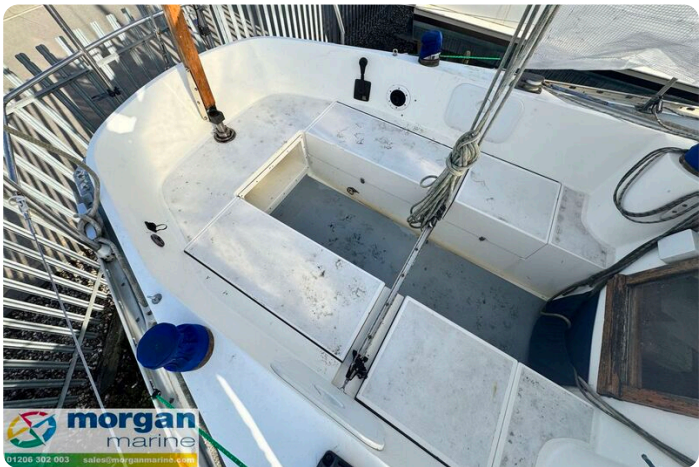
Cabins:	0
Berths:	0













Morgan Marine

The Boatyard, Shipyard Estate
CO7 0AR Colchester
United Kingdom (UK)

Phone: 44(0)1206302003

<https://morganmarine.com>

