



Beneteau Swift Trawler 41 Fly

£379,995 • Essex United Kingdom (UK) • Used • 2021

Presented by

Peter Marchant
Phone: 44(0)1206302003

Morgan Marine
The Boatyard, Shipyard
Estate
CO7 0AR Colchester
United Kingdom (UK)



Details

Make:	Beneteau
Model:	Swift Trawler 41 Fly
Year:	2021
Condition:	Used
Engine type:	
Fuel type:	Diesel
Length:	13.43 m (44.06 ft)
Beam:	4.25 m (13.94 ft)
Cabins:	0
Berths:	0



Morgan Marine



7zea.com

Description

EN

Beneteau Swift Trawler 41 Fly, 2020 build and 2021 model. Just arrived at Morgan Marine and presents an exceptional opportunity to own a beautifully maintained and highly capable cruiser. All too often the phrase like new is used, but this is one of those boats which truly warrants it and is an absolute credit to her previous owners. She is highly specified and fitted with twin Volvo Penta D4-270s with approx 308 hours. With a top speed of circa 22 knots and comfortable cruising speed of 18-20 knots. Offering generous accommodation for extended cruising, she features seven berths across three well appointed cabins, along with two spacious heads compartments. The interior is finished to a high standard, creating a warm and inviting atmosphere throughout, complemented by a large, practical galley complete with a full height fridge freezer ideal for longer stays aboard. Up on the flybridge, you'll find a superb social space with ample seating, a wet bar, and a bimini for shade, making it perfect for entertaining or relaxing while enjoying panoramic views. The vessel is equipped with both bow and stern thrusters for effortless manoeuvring, alongside an electric windlass, diesel heating. Navigation and onboard systems are equally impressive, featuring Raymarine electronics throughout, including a 12-inch Axiom chart plotter at the helm, twin 9 inch Axiom displays on the flybridge, Raymarine Ray90 dual station VHF, dual station autopilot, and Quantum radar connected via Raynet. An inverter with additional house battery and Fusion audio system with speakers complete the onboard setup. Clearly a much loved example, this Swift Trawler 41 Fly is presented in beautiful condition and is ready for her next owner to step aboard and enjoy. Viewings are highly recommended and available now at Morgan Marine.

Deck: GRP semi displacement hull. Electric windlass with Delta anchor, chain, rope. Bow roller. Anchor locker. Mooring cleats. High pulpits. Steps to flybridge. Storage lockers. Fenders and Lines. Deck shower. Large slatted solid wood bathing platform with Stainless Steel boarding ladder, grab handle and rubbing strake. Double transom gate to access cockpit. Wide side decks. Lazarette cockpit locker. Flybridge white covers for console and seats. Full enclosed cockpit canopy in Sunbrella colour. Ensign with pole. Cockpit locker.

Cabin: Steps down into cabin area - Alpi oak wood trim and External Marlin Brilliant White upholstery. Port side guest cabin with 2x single berths with infill to make into double berth with padded headboard, hanging storage, reading light and port hole. 6ft 4in headroom. Forward main cabin with island double berth with padded headboard, storage under berth, deck hatch with mosquito screen and blind, mirror, 2x hull windows, 2x hanging storage with lighting, reading lights and TV. Port side toilet compartment in master cabin with electric flush toilet with fresh and salt water, oval sink, towel rail, porthole and storage. Starboard side shower compartment with full standing shower, shower head, seat, teak flooring, and porthole. Starboard side 1x single berth guest cabin with storage and mattress. Starboard side toilet compartment with electric toilet both salt water and fresh water, oval sink, mirror, shower and storage. Interior blinds in all cabins, saloon area and toilet compartments. Teak flooring throughout interior with carpets in saloon, passageway and cabins. Upper deck - Saloon area with Port side U shaped saloon seating with leather cushions and backrest and saloon table. Pop out TV on bracket in saloon area. Helm seat. Saloon seating converts to double berth with privacy curtain on roof track. Port side U-shaped galley with Nimbus Prima Corian edging, oven, gas stove, double Stainless Steel sink, built in bin with access from the side, pop up table for extra worktop area, yacht case tableware, storage with drawers and over head galley lockers. Starboard side stand up 215L fridge freezer. Chatham clock in Brass. Battery breakers above fridge. Starboard side saloon storage with large worktop. Automatic fire extinguisher.

Cockpit: Solid wood slatted cockpit floor and starboard side side deck. Sliding patio doors into saloon area. Helm position with double pilot bench seat, storage, handrails, removable floor step, pilot sliding door with access to opening side boarding door (perfect for mooring single handed), dash with full engine controls, electronics and cup holders. Wheelhouse with teak floor and all round visibility + clear glass windscreen with anti-reflective coating and black lacquered aluminium frames, 3x electric windscreen wipers, windscreen washer, demister. Side windows with black lacquered aluminium frames. Compass. Retractable Stainless Steel ladder with teak steps up to flybridge area - Opening polyester hatch with gas strut. Stainless Steel flybridge rails all round with grey tinted windscreen. Flybridge galley with electric grill, sink, bin and 40l fridge. Mast for mounting navigation lights, radar, and aerials. Grab handles. Cup holders. Flybridge bimini in Sunbrella colour. L - shaped flybridge cushion seating with wooden table. Starboard side bench style seating with cushions and backrest. Pilot bolster seat. Flybridge dash with engine controls, steering wheel and dash.

Electronics: In wheelhouse - Raymarine Axiom 12 inch chart plotter. Raymarine Ray 90 dual station VHF. Marinc Deck searchlight. Raymarine wind anemometer. Raymarine autopilot dual station. DVB TV antenna. Raymarine Quantum radar wire via Raynet. Raymarine AIS 700 transducer with built in VHF splitter. Shore power with cable. Navigation lights. Anchor light. Twin battery chargers. Galvanic isolator. Seanapps smart technology. Compass. Twin station search light. Inverter 5KW. LED lights. Cockpit 12v socket. Engine dials. Double USB sockets. Horn. Fusion audio with speakers. On flybridge - Twin Raymarine Axiom 9inch chart plotter. Raymarine Ray 90 dual station VHF. Raymarine autopilot dual station. Compass. Electric windlass control. Bow and stern thruster control. Trim tab control. Volvo Penta engine gauges. Fusion audio control.

Machinery: Twin Volvo Penta D4 - 270hp diesel engines shaft drives with four-blade propellers with ambassador am15 rope cutter. Hydraulic steering. Engine room soundproofed with high density foam 40mm thick. Air intake for cooling engine compartment. Bow and stern thruster with remote control. Hot and cold water. Webasto air forced diesel heating. Lenco electric trim tabs. Water Capacity - 400 Litres. Fuel capacity - 1,170 Litres.

General information

Make:	Beneteau
Model:	Swift Trawler 41 Fly
Year:	2021
Condition:	Used

Engine

Engine type:

Fuel type: Diesel

Measurements

Length: 13.43 m (44.06 ft)

Beam: 4.25 m (13.94 ft)

Deep: 1.15 m (3.77 ft)

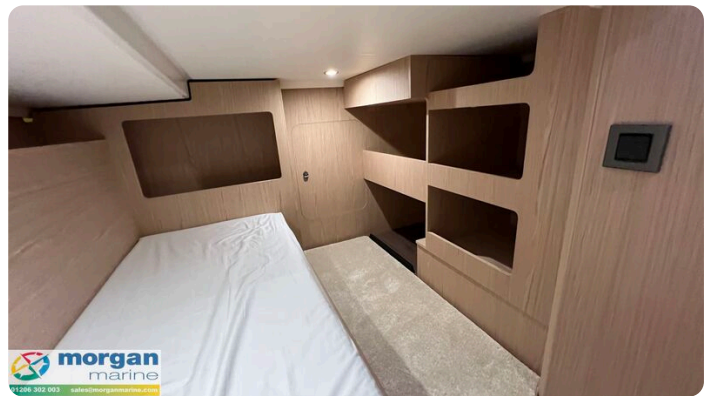
Accommodation

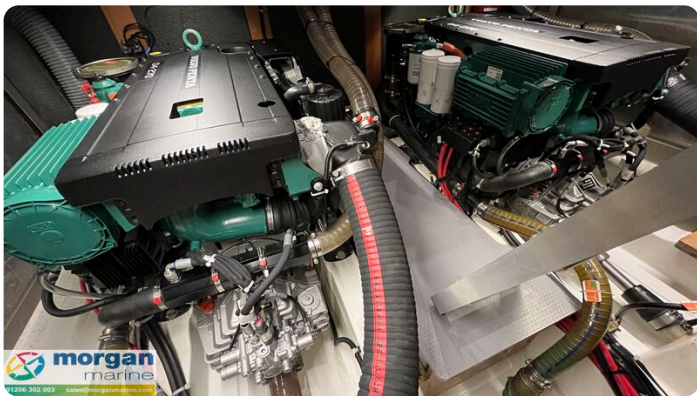
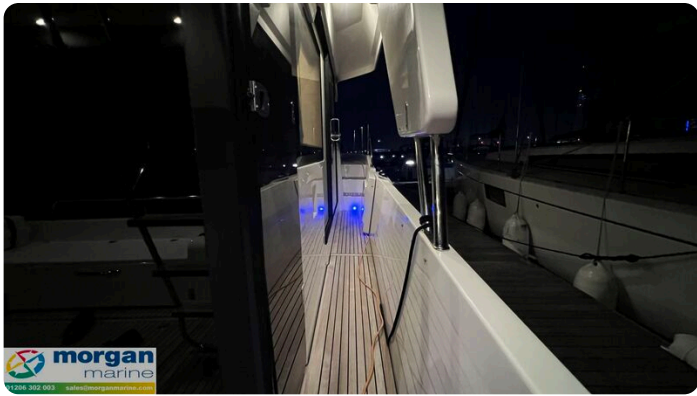
Cabins: 0

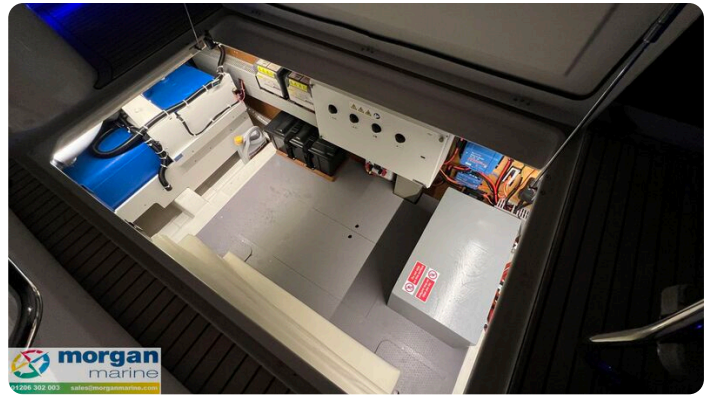
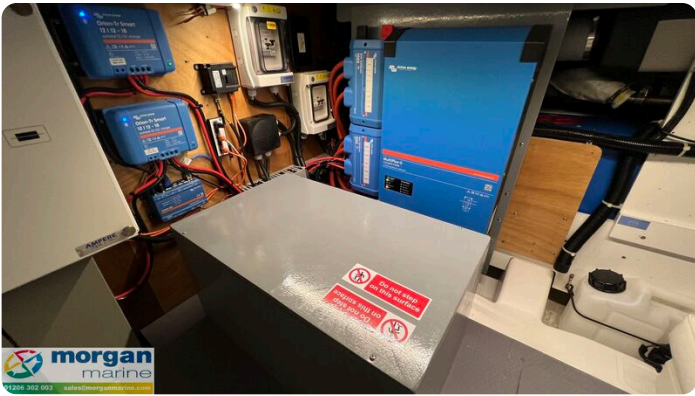
Berths: 0

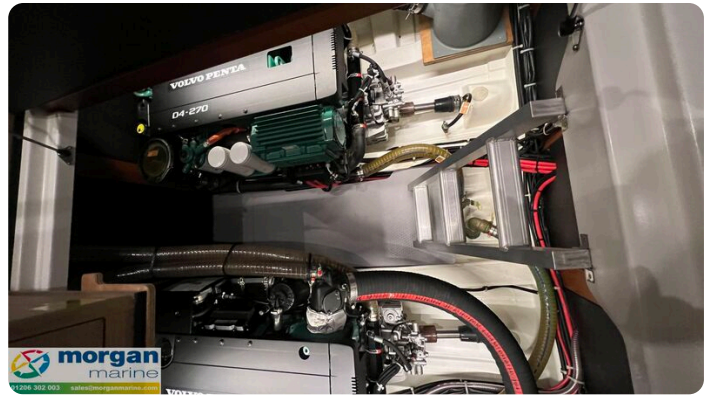
Images



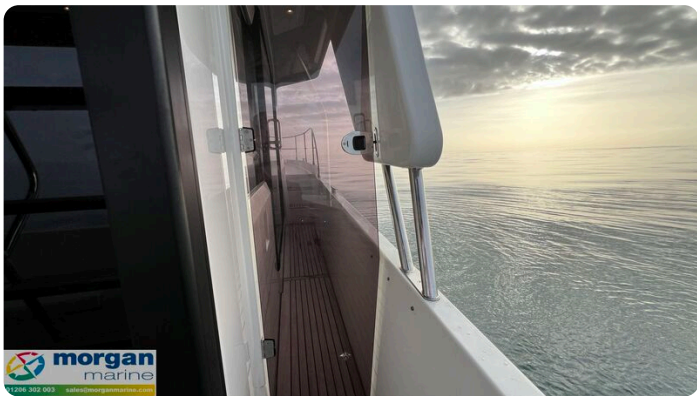








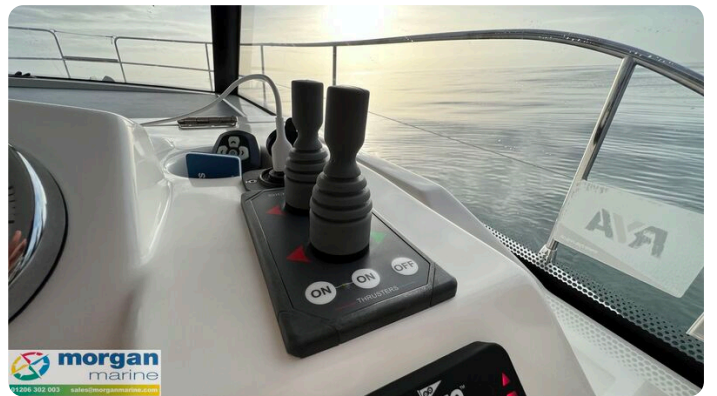
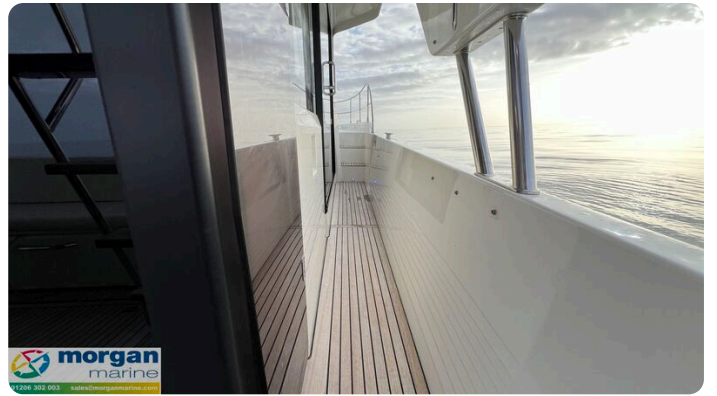
















Morgan Marine

The Boatyard, Shipyard Estate
CO7 0AR Colchester
United Kingdom (UK)

Phone: 44(0)1206302003

<https://morganmarine.com>

