



Beneteau OCEANIS 331

€55,000 • Adria Italy • Used • 2003

Presented by

Jan Spengler
Phone: +49 4101 5155566

**Michael Schmidt &
Partner Yachthandels
GmbH**

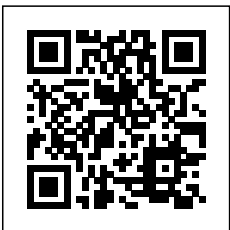
Rübekamp 5
25421 Pinneberg
Germany



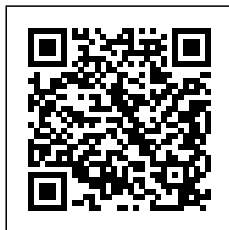
Michael Schmidt & Partner
International Yachtbrokers

Details

Make:	Beneteau
Model:	OCEANIS 331
Year:	2003
Condition:	Used
Engine:	Volvo Penta D1-30, 30 hp
Engine type:	
Fuel type:	Diesel
Fuel tank:	70 ()
Length:	10 m (32.81 ft)
Beam:	3.42 m (11.22 ft)
Cabins:	0
Berths:	0



Michael Schmidt &
Partner Yachthandels
GmbH



7zea.com

Description

EN

The boat is in excellent condition, ready to sail
2021 fully battened Mainsail
2016 new engine, 2024 new heat exchanger, 2026 shaft bearings
Epoxy-Protection hull 2010
teak in cockpit new 2021

Schmidt & Partner
International Yachtbrokers s.r.l.

Piazzetta dell' Imbarcadero 11
I - 33050 Aprilia Marittima/Latisana (UD)

Tel.: +39 0431 53711

Navigation equipment:
AIS, Rudder angle indicator (RAYMARINE), Compass (PLASTIMO), Odometer (RAYMARINE ST60), Depth Sounder (RAYMARINE ST60), GPS (FURUNO), Log (RAYMARINE ST60), Autopilot (RAYMARINE ST4000), Chartplotter (FURUNO), VHF Radio (ICOM IC-M401), Wind Station (RAYMARINE ST60).

Staging and technical:
Engine Alarm, Anchor (ROCNA 10 kg), Water pressure pump, Batteries (2024 160 Ah + 80 Ah), Shore power cable, Deck Shower, Platform, Manual Bilge Pump, Shorepower connector, Voltage Rectifier, Electric Windlass (800W), swimming ladder, Windex.

Domestic Facilities onboard:
Warm Water System, 12V Outlets, 220V Outlets, Manual Toilet.

Security equipment:
Safety equipment within 12 miles.

Sails accessories:
Gennaker equipment, Jib Furling System, Ball bearing slider mainsail, Lazy Bag, Lazy Jack, Mainsheet traveller, Vang.

Kitchen and appliances:
Galley, Burner.

Accessories notes:
VOLVO Easy Connect bluetooth interface data Engine, Instrument data and AIS receiver Wifi

IT

L'imbarcazione si trova in eccellenti condizioni, pronto per navigare
randa steccata del 2021
motore del 2016, scambiatore calore sostituito 2024, boccole asse 2026
protezione opera viva epossidica 2010
teak in pozzetto nuovo 2021

Schmidt & Partner
International Yachtbrokers s.r.l.

Piazzetta dell' Imbarcadero 11
I - 33050 Aprilia Marittima/Latisana (UD)

Tel.: +39 0431 53711

Strumentazione elettronica di navigazione:
AIS, Angolo barra (RAYMARINE), Bussola (PLASTIMO), Contamiglia (RAYMARINE ST60), Ecoscandaglio (RAYMARINE ST60), GPS (FURUNO), Log (RAYMARINE ST60), Pilota automatico (RAYMARINE ST4000), Plotter (FURUNO), Radio VHF (ICOM IC-M401), Stazione vento (RAYMARINE ST60).

Allestimento tecnico e di coperta:

Allarme motore, Ancora (ROCNA 10 kg), Autoclave, Batterie (2024 160 Ah + 80 Ah), Cavo corrente di banchina, Doccia esterna, Piattaforma, Pompa di sentina manuale, Presa 220V banchina, Raddrizzatore, Salpa Ancore Elettrico (800W), Scaletta da bagno, Windex.

Dotazioni domestiche di bordo:
Boiler, Prese interne 12v, Prese interne 220v, WC marino manuale.

Dotazioni di sicurezza:
Dotazioni di sicurezza entro 12 miglia.

Accessori Vele:
Attrezzatura Gennaker, Avvolgi Fiocco, Carrelli a sfera randa, Lazy Bag, Lazy Jack, Trasto randa, Vang rigido.

Cucina ed elettrodomestici:
Cucina, Fornello.

Note accessori:
interfaccia VOLVO Easy Connect bluetooth dati Motore, Dati strumentazione e ricevitore AIS Wifi

FR

Le bateau est en excellent état, prêt à naviguer
Grand-voile à batting 2021
Moteur 2016, 2024 remplacé l'échangeur thermique, bagues d'essieu 2026
Protection de la coque époxy 2010
Nouveau 2021 en teck dans le cockpit

Schmidt & Partner
International Yachtbrokers s.r.l.

Piazzetta dell' Imbarcadero 11
I - 33050 Aprilia Marittima/Latisana (UD)

Tel. : +39 0431 53711

Équipement électronique de navigation:
AIS, Indicateur d'angle de barre (RAYMARINE), Compas (PLASTIMO), Loch (RAYMARINE ST60), Sondeur pêche (RAYMARINE ST60), GPS (FURUNO), Loch (RAYMARINE ST60), Pilote automatique (RAYMARINE ST4000), Lecteur de cartes (FURUNO), Radio VHF (ICOM IC-M401), Anémomètre/Girouette (RAYMARINE ST60).

Équipement de pont:
Alarme moteur, Ancre (ROCNA 10 kg), Eau sous pression, Batteries (2024 160 Ah + 80 Ah), Câble d'alimentation à quai, Douche de cockpit, Plateforme arrière, Pompe de cale manuelle, Prise de quai, Onduleur, Guindeau électrique (800W), Echelle de bain, Windex.

Équipement intérieur:
Ballon d'eau chaude, Prises interieures 12v, Prises interieures 220v, Toilettes manuelles.

Équipement de sécurité:
Équipement sécurité jusqu'à 12 miles.

Équipement voiles:
Équipement Gennaker, Enrouleur de foc, Chariots à bille de GV, Lazy Bag, Lazy Jack, barre d'écoute, halebas.

Équipement de confort:
Cuisine, Cuisinière.

Notes équipement:

VOLVO Easy Connect interface bluetooth Moteur de données, données d'instruments et récepteur AIS Wifi

DE

Das Boot ist in ausgezeichnetem Zustand, sofort startklar
2021 Latten-Großsegel
Motor neu 2016, 2024 Wärmetauscher ersetzt, 2026 Wellenlager neu
Epoxid-Behandlung Unterwasserschiff 2010
Teak im Cockpit neu 2021

Schmidt & Partner
International Yachtbrokers s.r.l.

Piazzetta dell' Imbarcadere 11
I - 33050 Aprilia Marittima/Latisana (UD)

Tel.: +39 0431 53711

Navigation elektronische Instrumentation:
AIS, Ruderlageanzeiger (RAYMARINE), Kompass (PLASTIMO), Logge (RAYMARINE ST60), Echolot (RAYMARINE ST60), GPS (FURUNO), Log (RAYMARINE ST60), Autopilot (RAYMARINE ST4000), Kartenplotter (FURUNO), UKW-Funk (ICOM IC-M401), Windmessanlage (RAYMARINE ST60).

Deck und technische Ausrüstung:
Motoralarm, Anker (ROCNA 10 kg), Druckwasserpumpe, Batterien (2024 160 Ah + 80 Ah), Landstromkabel, Cockpitdusche, Plattform, manuelle Bilgepumpe, Landanschluß, Rectifier, elektrische Ankerwinde (800W), Badeleiter, Windex.

Anlagen an Bord:
Warmwasserbereiter, 12V Steckdose, 220V Steckdose, manuelles WC.

Sicherheit:
Sicherheitsausrüstung Fahrtgebiet innerhalb 12 sm.

Rigg:
Gennaker-Ausrüstung, Rollfockanlage, kugelgelagerte Mastrutscher, Lazy Bag, Lazy Jack, Grossschottraveller, Baumniederholer.

Küchen- und Haushaltsgeräte:
Pantry, Herd.

Hinweis-Zubehör:
VOLVO Easy Connect Bluetooth-Schnittstellendaten Motor, Instrumentendaten und AIS-Empfänger, WLAN

ES

El barco está en excelente estado, listo para zarpar
Vela mayor de bating 2021
Motor 2016, 2024 reemplazado intercambiador de calor, casquillos de eje 2026
Protección del casco epoxi 2010
Teca en cabina nuevo 2021

Schmidt & Socio
International Yachtbrokers s.r.l.

Piazzetta dell' Imbarcadere 11
I - 33050 Aprilia Marittima/Latisana (UD)

Tel.: +39 0431 53711

Instrumentación electrónica de navegación:
AIS, Indicador de ángulo de timón (RAYMARINE), Compás (PLASTIMO), Cuenta millas (RAYMARINE ST60), Sonda (RAYMARINE ST60), GPS (FURUNO), Corredera (RAYMARINE ST60), Piloto automático (RAYMARINE ST4000), Plotter (FURUNO), Radio VHF (ICOM IC-M401), Equipo de viento

(RAYMARINE ST60).

Equipo técnico y de cubierta:
Alarma motor, Ancla (ROCNA 10 kg), Bomba de agua dulce, Baterías (2024 160 Ah + 80 Ah), Cable de corriente de puerto, Ducha externa, Plataforma, Bomba de achique manual, Toma de 220V para el puerto, Rectificador, Molinete eléctrico (800W), Escalera de baño, Windex.

Enseres domesticos de abodo:
Calentador, Tomas de 12v, Enchufes de 220v, WC marino manual.

Equipo de seguridad:
Equipo de seguridad a 12 millas.

Accesorios Velas:
Maniobra Genaker, Enrollador de foque, Carros para guía de vela mayor, Lazy Bag, Lazy Jack, Caro de escota de mayor, Contra.

Cocina y electrodomésticos:
Cocina, Fogón.

Notas accesorios:
Interfaz bluetooth VOLVO Easy Connect Motor de datos, datos de instrumentos y receptor AIS Wifi

NL

De boot is in uitstekende staat en klaar om te varen
2021 Battening Grootzeil
2016 motor, 2024 vervangen warmtewisselaar, 2026 asbussen
Beschermer van de epoxyromp 2010
Teak in cockpit Nieuw 2021

Schmidt & Partner
International Yachtbrokers s.r.l.

Piazzetta dell' Imbarcadere 11
I - 33050 Aprilia Marittima/Latisana (UD)

Tel.: +39 0431 53711

Elektronische navigatie-instrumenten:
AIS, Roerhoek indicator (RAYMARINE), Kompas (PLASTIMO), Log (RAYMARINE ST60), Dieptemeter (RAYMARINE ST60), GPS (FURUNO), Log (RAYMARINE ST60), Autopilot (RAYMARINE ST4000), Kaartplotter (FURUNO), Marifoon (ICOM IC-M401), Windmeter (RAYMARINE ST60).

Technische- en dekuitrusting:
Motor Alarm, Anker (ROCNA 10 kg), Waterdruk systeem, Accu's (2024 160 Ah + 80 Ah), Walstroomkabel, Buitendouche, Platform, Handmatige bilgepomp, Walaansluiting 230V, Gelijkrichter, Elektrische ankerlier (800W), Zwemtrap, Windex.

Huishoudelijke apparatuur aan boord:
Warmwater boiler, 12V Stopcontacten, 230V Stopcontacten, Handmatige toilet.

Veiligheidsuitrusting:
Veiligheidsuitrusting binnen 12 mijl buitengaats.

Accessoires Zeilen:
Gennaker Uitrusting, Rolfok systeem, Grootzeil kogelgelagerde karren, Lazy Bag, Lazy-Jack systeem, Grootschoot traveller, Giek neerhouder.

Keuken & Apparatuur:
Keuken, Fornuis.

Opmerkingen over accessoires:
VOLVO Easy Connect bluetooth-interface data, motor, instrument, data en AIS-ontvanger, wifi.

RU

Лодка в отличном состоянии, готова к плаванию
2021 Баттенинг грота
Двигатель 2016 года, в 2024 году заменён теплообменник,
штулки осей 2026 года
Защита эпоксидного корпуса 2010
Тик в кабине нового 2021 года

Schmidt & Partner
International Yachtbrokers s.r.l.

Piazzetta dell' Imbarcadero 11
I - 33050 Aprilia Marittima/Latisana (UD)

Тел.: +39 0431 53711

Электронные навигационные приборы:
AIS, Угол поворота (RAYMARINE), Компас (PLASTIMO),
спидометр (RAYMARINE ST60), Эхолот (RAYMARINE ST60),
GPS (FURUNO), Вход (RAYMARINE ST60), Автопилот
(RAYMARINE ST4000), плоттера (FURUNO), Радио VHF (ICOM
IC-M401), Ветровая установка (RAYMARINE ST60).

Техническое оснащение и оснащение палубы:
Аварийный сигнал двигателя, Якорь (ROCNA 10 kg),
Автоклав, аккумуляторы (2024 160 Ah + 80 Ah), Кабель
берегового питания, внешняя душа, Платформа, Ручной
трюмный насос, Прямая розетка от причала, Выпрямитель,
Электрическая якорная лебедка (800W), Трап ванной,
Windex.

Бытовое оснащение на борту:
котлом, Внутренние розетки 12v, Внутренние розетки
220v, Ручной морской туалет.

Оборудование для обеспечения безопасности:
Safety equipment within 12 miles.

Аксессуары паруса:
Генакер оборудование, Устройство кливер, Ball bearing
slider mainsail, Lazy Bag, Джек лениво, Mainsheet traveller,
Ванг.

Кухня и бытовые приборы:
Кухня, плитой.

Дополнительные примечания:
Интерфейс данных VOLVO Easy Connect Bluetooth,
инструментальный и AIS-приёмник Wi-Fi

General information

Make:	Beneteau
Model:	OCEANIS 331
Year:	2003
Condition:	Used

Engine

Engine:	Volvo Penta D1-30, 30 hp
Engine type:	
Fuel type:	Diesel
Fuel tank:	70 ()

Measurements

Length:	10 m (32.81 ft)
Beam:	3.42 m (11.22 ft)
Deep:	1.6 m (5.25 ft)

Accommodation

Cabins:	0
Berths:	0

Images



_DSC3234



_DSC3236



_DSC3238



_DSC3242



_DSC3248



_DSC3265



_DSC3266



_DSC3272



_DSC3276



_DSC3281



_DSC3284



_DSC3286



20260331_124346



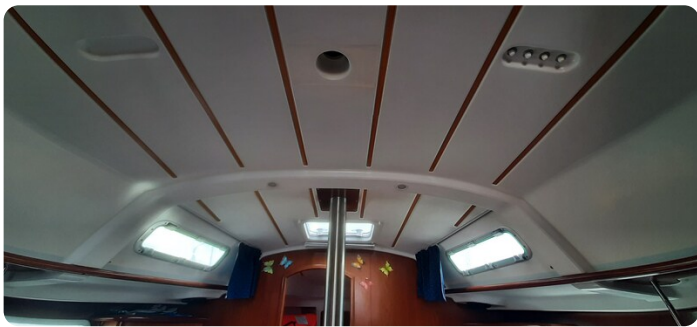
20260331_124406



20260331_124416



20260331_124430



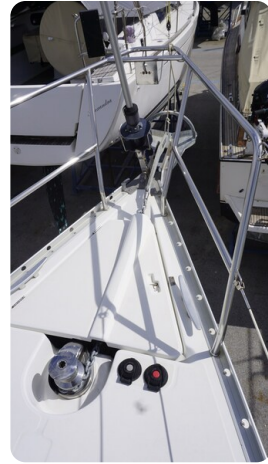
20260331_124449



_DSC3226



_DSC3244



_DSC3246



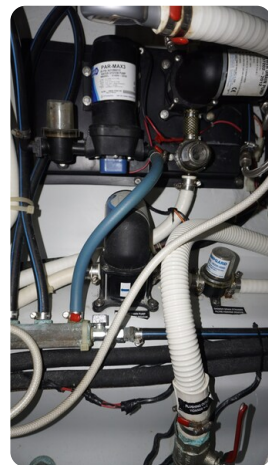
_DSC3251



_DSC3257



_DSC3259



_DSC3265

Michael Schmidt & Partner Yachthandels GmbH

Rübekamp 5
25421 Pinneberg
Germany

Phone: +49 4101 5155566

<https://www.msp-yacht.de>



Michael Schmidt & Partner
International Yachtbrokers