



# Bavaria Bavaria 37 Cruiser

€74,900 • Norddeutschland Germany • Used • 2006

## Presented by

Jan Spengler  
Phone: +49 4101 5155566

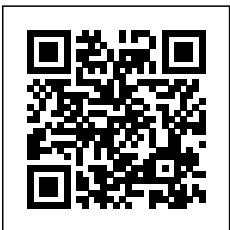
### Michael Schmidt & Partner Yachthandels GmbH

Rübekamp 5  
25421 Pinneberg  
Germany

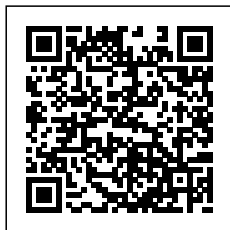


## Details

Make:	Bavaria
Model:	Bavaria 37 Cruiser
Year:	2006
Condition:	Used
Engine:	Volvo Penta D1-30, 29 hp
Engine type:	
Fuel type:	Diesel
Fuel tank:	150 l (39.63 gal)
Length:	11.35 m (37.24 ft)
Beam:	3.8 m (12.47 ft)
Cabins:	0
Berths:	0



Michael Schmidt &  
Partner Yachthandels  
GmbH



7zea.com

# Description

---

EN

Very well maintained private yacht with useful accessories!

Exclusively on offer at Michael Schmidt & Partner. Central Agent! Detailed questions are welcome. Talk to us, we have visited this yacht for you.  
More photos on request!

Navigation equipment:

Odometer (Raymarine), Depth Sounder (Raymarine), Log (Raymarine), Autopilot (Raymarine), Plotter with GPS antenna (Raymarine C 70), VHF Radio (Raymarine), Wind Station (Raymarine).

Staging and technical:

Teak Side Decks, Shore power cable, Platform (Badeplattform), Manual Bilge Pump, Teak Cockpit, Shorepower connector (220V), swimming ladder, cockpit table, 4 Winch (Lewmar ST).

Domestic Facilities onboard:

12V Outlets (div), 220V Outlets (div), Heater (Webasto), Manual Toilet.

Entertainment:

Radio AM/FM.

Sails accessories:

Spi Equipment (Spi-Baum), Jib Furling System, Mainsail Furling System, Mainsheet traveller.

Kitchen and appliances:

Galley (Doppelspüle), Burner (2-flammig, Gas).

Upholstery:

Sprayhood (und Kuchenbude), Cockpit Cover.

Accessories notes:

3-blade folding propeller

IT

Yacht privato molto ben tenuto con accessori utili!

Offerta esclusivamente da Michael Schmidt & Partner. Agente Centrale! Domande dettagliate sono ben accette. Parla con noi, abbiamo visitato questo yacht per te.  
Altre foto su richiesta!

Strumentazione elettronica di navigazione:

Contamiglia (Raymarine), Ecoscandaglio (Raymarine), Log (Raymarine), Pilota automatico (Raymarine), Plotter con antenna GPS (Raymarine C 70), Radio VHF (Raymarine), Stazione vento (Raymarine).

Allestimento tecnico e di coperta:

Camminamenti laterali in teak, Cavo corrente di banchina, Piattaforma (Badeplattform), Pompa di sentina manuale, Pozzetto Teak, Presa 220V banchina (220V), Scaletta da bagno, Tavolo pozzetto, 4 Winch (Lewmar ST).

Dotazioni domestiche di bordo:

Prese interne 12v (div), Prese interne 220v (div), Riscaldamento (Webasto), WC marino manuale.

Intrattenimento:

Radio AM/FM.

Accessori Vele:

Attrezzatura Spi (Spi-Baum), Avvolgi Fiocco, Avvolgi Randa, Trasto randa.

Cucina ed elettrodomestici:

Cucina (Doppelspüle), Fornello (2-flammig, Gas).

Tappezzerie:

Cappottina (und Kuchenbude), Copripozzetto.

Note accessori:

Elica pieghevole a 3 pale

FR

Yacht privé très bien entretenu avec des accessoires utiles !

Exclusivement proposé chez Michael Schmidt & Partner. Agent central ! Toutes les questions détaillées sont les bienvenues.  
Parle-nous, nous avons visité ce yacht pour toi.  
Plus de photos sur demande !

Equipement électronique de navigation:

Loch (Raymarine), Sondeur pêche (Raymarine), Loch (Raymarine), Pilote automatique (Raymarine), Plotter GPS (Raymarine C 70), Radio VHF (Raymarine), Anémomètre/Girouette (Raymarine).

Equipement de pont:

Passavant en teck, Câble d'alimentation à quai, Plateforme arrière (Badeplattform), Pompe de cale manuelle, Cockpit en teck, Prise de quai (220V), Echelle de bain, table de cockpit, 4 Winch (Lewmar ST).

Equipement intérieur:

Prises interieures 12v (div), Prises interieures 220v (div), Chauffage (Webasto), Toilettes manuelles.

Divers:

Radio AM/FM.

Equipement voiles:

Accastillage de spi (Spi-Baum), Enrouleur de foc, Enrouleur de grand voile, barre d'écoute.

Equipement de confort:

Cuisine (Doppelspüle), Cuisinière (2-flammig, Gas).

Sellerie et tauds:

Capote (und Kuchenbude), Taud de cockpit.

Notes équipement:

Hélice pliante à 3 pales

DE

Sehr gut gepflegte private Yacht mit sinnvollem Zubehör!

Exklusiv im Angebot bei Michael Schmidt & Partner. Central Agent! Detailfragen sind herzlich willkommen. Sprechen Sie uns an, wir haben diese Yacht für Sie besichtigt.  
Weitere Fotos auf Anfrage!

Navigation elektronische Instrumentation:

Logge (Raymarine), Echolot (Raymarine), Log (Raymarine), Autopilot (Raymarine), Kartenplotter mit GPS (Raymarine C 70), UKW-Funk (Raymarine), Windmessenanlage (Raymarine).

Deck und technische Ausrüstung:

Teak auf Laufdecks, Landstromkabel, Plattform (Badeplattform), manuelle Bilgepumpe, Teak im Cockpit, Landanschluß (220V), Badeleiter, Cockpittisch, 4 Winschen (Lewmar ST).

Anlagen an Bord:

12V Steckdose (div), 220V Steckdose (div), Heizung (Webasto), manuelles WC.

Unterhaltung:  
Radio AM/FM.

Rigg:  
Spinnaker Ausrüstung (Spi-Baum), Rollfockanlage, Rollgross,  
Grosschottraveller.

Küchen-und Haushaltsgeräte:  
Pantry (Doppelspüle), Herd (2-flammig, Gas).

Polster und Persenninge:  
Sprayhood (und Kuchenbude), Cockpitpersenning.

Hinweis-Zubehör:  
3-Blatt Faltpropeller

ES  
¡Yate privado muy bien cuidado con accesorios útiles!

Disponible en exclusiva en Michael Schmidt & Partner. ¡Agente Central! Se aceptan preguntas detalladas. Háblanos, hemos visitado este yate por ti.  
¡Más fotos a petición!

Instrumentación electrónica de navegación:  
Cuenta millas (Raymarine), Sonda (Raymarine), Corredera (Raymarine), Piloto automático (Raymarine), Plotter con antena GPS (Raymarine C 70), Radio VHF (Raymarine), Equipo de viento (Raymarine).

Equipo técnico y de cubierta:  
Pasillos laterales en teca, Cable de corriente de puerto, Plataforma (Badeplattform), Bomba de achique manual, Bañera en teca, Toma de 220V para el puerto (220V), Escalera de baño, mesa de bañera, 4 Winch (Lewmar ST).

Enseres domesticos de abodo:  
Tomas de 12v (div), Enchufes de 220v (div), Calefacción (Webasto), WC marino manual.

Entretenimiento:  
Radio AM/FM.

Accesorios Velas:  
Aparejo Spi (Spi-Baum), Enrollador de foque, Enrollador de mayor, Caro de escota de mayor.

Cocina y electrodomésticos:  
Cocina (Doppelspüle), Fogón (2-flammig, Gas).

Tapicerías:  
Capota antirrocciones (und Kuchenbude), Toldo de bañera.

Notas accesorios:  
Hélice plegable de 3 palas

NL  
Zeer goed onderhouden privéjacht met handige accessoires!

Exclusief aangeboden bij Michael Schmidt & Partner. Centrale Agent! Gedetailleerde vragen zijn welkom. Praat met ons, we hebben dit jacht voor je bezocht.  
Meer foto's op verzoek!

Elektronische navigatie-instrumenten:  
Log (Raymarine), Dieptemeter (Raymarine), Log (Raymarine), Autopiloot (Raymarine), Kaartplotter met GPS-antenne (Raymarine C 70), Marifoon (Raymarine), Windmeter (Raymarine).

Technische- en dekuitrusting:  
Teak op gangboorden, Walstroomkabel, Platform (Badeplattform), Handmatige bilgepomp, Teak in kuip,

Walaansluiting 230V (220V), Zwemtrap, Kuintafel, 4 Lier (Lewmar ST).

Huishoudelijke apparatuur aan boord:  
12V Stopcontacten (div), 230V Stopcontacten (div), Verwarming (Webasto), Handmatige toilet.

Vermaak:  
Radio AM/FM.

Accessoires Zeilen:  
Spinnaker uitrusting (Spi-Baum), Rolfok systeem, Grootzeil rolsysteem, Grootschoot traveller.

Keuken & Apparatuur:  
Keuken (Doppelspüle), Fornois (2-flammig, Gas).

Bekleding:  
Sprayhood (und Kuchenbude), Kuiptent.

Opmerkingen over accessoires:  
3-bladige vouwpropeller

RU  
Очень хорошо ухоженная частная яхта с полезными аксессуарами!

Эксклюзивно доступно в Michael Schmidt & Partner. Центральный агент! Подробные вопросы приветствуются. Поговорите с нами, мы посетили эту яхту для вас. Больше фотографий по запросу!

Электронные навигационные приборы:  
спидометр (Raymarine), Эхолот (Raymarine), Вход (Raymarine), Автопилот (Raymarine), Плоттер с GPS антенны (Raymarine C 70), Радио VHF (Raymarine), Ветровая установка (Raymarine).

Техническое оснащение и оснащение палубы:  
Боковые проходы из тика, Кабель берегового питания, Платформа (Badeplattform), Ручной трюмный насос, Колодец из тика, Прямая розетка от причала (220V), Трап ванной, cockpit table, 4 Лебедка (Lewmar ST).

Бытовое оснащение на борту:  
Внутренние розетки 12v (div), Внутренние розетки 220v (div), Отопление (Webasto), Ручной морской туалет.

Развлечения:  
Radio AM/FM.

Аксессуары паруса:  
Оборудование Spi (Spi-Baum), Устройство кливер, Устройство для гафельного паруса, Mainsheet traveller.

Кухня и бытовые приборы:  
Кухня (Doppelspüle), плитой (2-flammig, Gas).

Обивка:  
Кожух (und Kuchenbude), Задвижка колодца.

Дополнительные примечания:  
Складной винт с тремя лопастями

## General information

Make:	Bavaria
Model:	Bavaria 37 Cruiser
Year:	2006
Condition:	Used

## Engine

Engine:	Volvo Penta D1-30, 29 hp
Engine type:	
Fuel type:	Diesel
Fuel tank:	150 l (39.63 gal)

## Measurements

Length:	11.35 m (37.24 ft)
Beam:	3.8 m (12.47 ft)
Deep:	1.95 m (6.40 ft)
Weight:	8500 kg (18,738.98 lb)

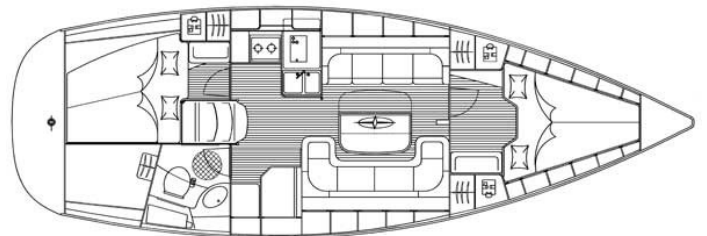
## Accommodation

Cabins:	0
Berths:	0

## Images



Bav 37 SIRFAN 9



Bavaria 37 Cruiser Layout 2 Kabinen



Bav 37 SIRFAN 3



Bav 37 SIRFAN 10



Bav 37 SIRFAN 19



Bav 37 SIRFAN 24



Bav 37 SIRFAN 26



Bav 37 SIRFAN 28



Bav 37 SIRFAN 35



Bav 37 SIRFAN 36



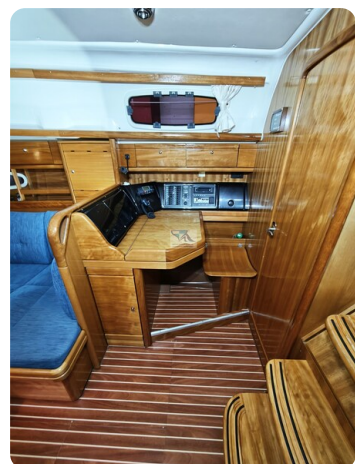
Bav 37 SIRFAN 53



Bav 37 SIRFAN 37



Bav 37 SIRFAN 38



Bav 37 SIRFAN 39



Bav 37 SIRFAN 44



Bav 37 SIRFAN 45



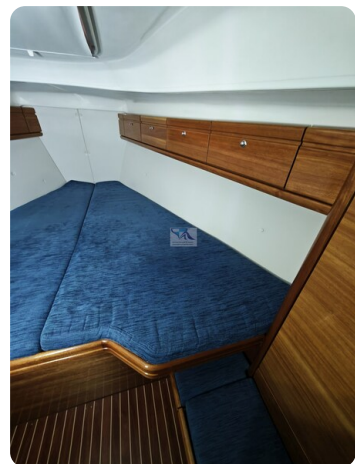
Bav 37 SIRFAN 47



Bav 37 SIRFAN 50



Bav 37 SIRFAN 52



Bav 37 SIRFAN 57



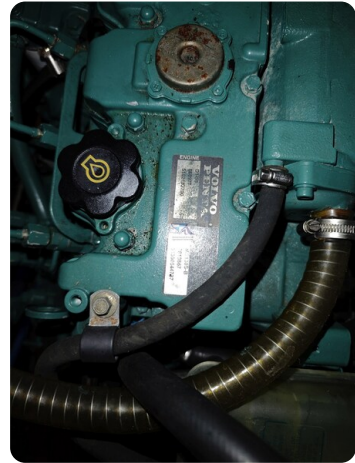
Bav 37 SIRFAN 61



Bav 37 SIRFAN 62



Bav 37 SIRFAN 73



Bav 37 SIRFAN 74

**Michael Schmidt & Partner Yachthandels GmbH**

Rübekamp 5  
25421 Pinneberg  
Germany

Phone: +49 4101 5155566

<https://www.msp-yacht.de>



**Michael Schmidt & Partner**  
**International Yachtbrokers**